

**Latrophilin-2 rabbit pAb****Cat#: orb768200 (Manual)**

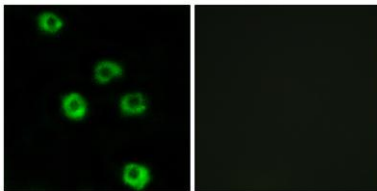
For research use only. Not intended for diagnostic use.

<b>Product Name</b>	Latrophilin-2 rabbit pAb
<b>Host species</b>	Rabbit
<b>Applications</b>	IHC;IF;ELISA
<b>Species Cross-Reactivity</b>	Human;Mouse;Rat
<b>Recommended dilutions</b>	WB 1:500-2000 ,Immunohistochemistry: 1/100 - 1/300. Immunofluorescence: 1/200 - 1/1000. ELISA: 1/5000. Not yet tested in other applications.
<b>Immunogen</b>	The antiserum was produced against synthesized peptide derived from human LPHN2. AA range:551-600
<b>Specificity</b>	Latrophilin-2 Polyclonal Antibody detects endogenous levels of Latrophilin-2 protein.
<b>Formulation</b>	Liquid in PBS containing 50% glycerol, 0.5% BSA and 0.02% sodium azide..
<b>Storage</b>	Store at -20°C. Avoid repeated freeze-thaw cycles.
<b>Protein Name</b>	Latrophilin-2
<b>Gene Name</b>	LPHN2
<b>Cellular localization</b>	Membrane ; Multi-pass membrane protein .
<b>Purification</b>	The antibody was affinity-purified from rabbit antiserum by affinity-chromatography using epitope-specific immunogen.
<b>Clonality</b>	Polyclonal

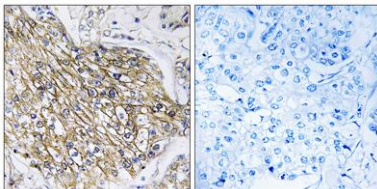
<b>Concentration</b>	1 mg/ml
<b>Observed band</b>	
<b>Human Gene ID</b>	23266
<b>Human Swiss-Prot Number</b>	O95490
<b>Alternative Names</b>	LPHN2; KIAA0786; LEC1; LPHH1; Latrophilin-2; Calcium-independent alpha-latrotoxin receptor 2; CIRL-2; Latrophilin homolog 1; Lectomedin-1

**Background**

This gene encodes a member of the latrophilin subfamily of G-protein coupled receptors. The encoded protein participates in the regulation of exocytosis. The proprotein is thought to be further cleaved within a cysteine-rich G-protein-coupled receptor proteolysis site into two chains that are non-covalently bound at the cell membrane. Alternative splicing results in multiple transcript variants. [provided by RefSeq, Jul 2014],



**Immunofluorescence analysis of COS7 cells, using LPHN2 Antibody. The picture on the right is blocked with the synthesized peptide.**



**Immunohistochemistry analysis of paraffin-embedded human breast carcinoma tissue, using LPHN2 Antibody. The picture on the right is blocked with the synthesized peptide.**