

Glucosidase II α rabbit pAb

Cat#: orb768191 (Manual)

For research use only. Not intended for diagnostic use.

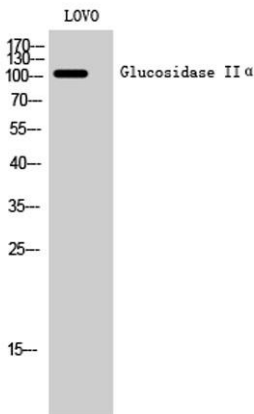
Product Name	Glucosidase II α rabbit pAb
Host species	Rabbit
Applications	WB;IHC;IF;ELISA
Species Cross-Reactivity	Human;Mouse
Recommended dilutions	Western Blot: 1/500 - 1/2000. Immunohistochemistry: 1/100 - 1/300. ELISA: 1/5000. Not yet tested in other applications.
Immunogen	The antiserum was produced against synthesized peptide derived from human GANAB. AA range:242-291
Specificity	Glucosidase II α Polyclonal Antibody detects endogenous levels of Glucosidase II α protein.
Formulation	Liquid in PBS containing 50% glycerol, 0.5% BSA and 0.02% sodium azide..
Storage	Store at -20°C. Avoid repeated freeze-thaw cycles.
Protein Name	Neutral alpha-glucosidase AB
Gene Name	GANAB
Cellular localization	Endoplasmic reticulum . Golgi apparatus . Melanosome . Identified by mass spectrometry in melanosome fractions from stage I to stage IV. .
Purification	The antibody was affinity-purified from rabbit antiserum by affinity-chromatography using epitope-specific immunogen.
Clonality	Polyclonal

Explore. Bioreagents.

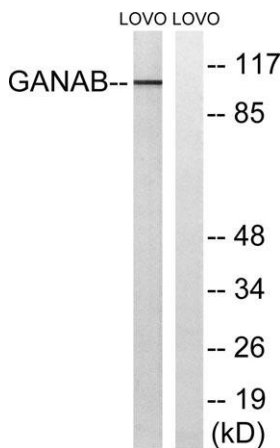
Concentration	1 mg/ml
Observed band	107kD
Human Gene ID	23193
Human Swiss-Prot Number	Q14697
Alternative Names	GANAB; G2AN; KIAA0088; Neutral alpha-glucosidase AB; Alpha-glucosidase 2; Glucosidase II subunit alpha

Background

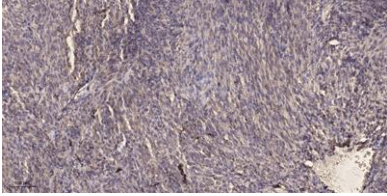
This gene encodes the alpha subunit of glucosidase II and a member of the glycosyl hydrolase 31 family of proteins. The heterodimeric enzyme glucosidase II plays a role in protein folding and quality control by cleaving glucose residues from immature glycoproteins in the endoplasmic reticulum. Expression of the encoded protein is elevated in lung tumor tissue and in response to UV irradiation. Mutations in this gene cause autosomal-dominant polycystic kidney and liver disease. [provided by RefSeq, Jul 2016],



Western Blot analysis of LOVO cells using Glucosidase II α Polyclonal Antibody



Western blot analysis of lysates from LOVO cells, using GANAB Antibody. The lane on the right is blocked with the synthesized peptide.



Immunohistochemical analysis of paraffin-embedded human Colon cancer. 1, Antibody was diluted at 1:200(4° overnight). 2, Tris-EDTA,pH9.0 was used for antigen retrieval. 3,Secondary antibody was diluted at 1:200(room temperature, 45min).