

PRC rabbit pAb**Cat#: orb768182 (Manual)**

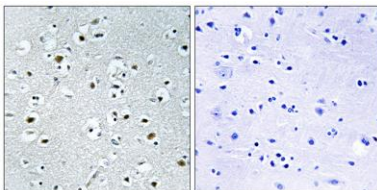
For research use only. Not intended for diagnostic use.

Product Name	PRC rabbit pAb
Host species	Rabbit
Applications	IHC;IF;ELISA
Species Cross-Reactivity	Human;Mouse
Recommended dilutions	Immunohistochemistry: 1/100 - 1/300. ELISA: 1/40000. Not yet tested in other applications.
Immunogen	The antiserum was produced against synthesized peptide derived from human PPRC1. AA range:1609-1658
Specificity	PRC Polyclonal Antibody detects endogenous levels of PRC protein.
Formulation	Liquid in PBS containing 50% glycerol, 0.5% BSA and 0.02% sodium azide..
Storage	Store at -20°C. Avoid repeated freeze-thaw cycles.
Protein Name	Peroxisome proliferator-activated receptor gamma coactivator-related protein 1
Gene Name	PPRC1
Cellular localization	Nucleus . Colocalizes with NRF1. .
Purification	The antibody was affinity-purified from rabbit antiserum by affinity-chromatography using epitope-specific immunogen.
Clonality	Polyclonal

Concentration	1 mg/ml
Observed band	
Human Gene ID	23082
Human Swiss-Prot Number	Q5VV67
Alternative Names	PPRC1; KIAA0595; Peroxisome proliferator-activated receptor gamma coactivator-related protein 1; PGC-1-related coactivator; PRC

Background

The protein encoded by this gene is similar to PPAR-gamma coactivator 1 (PPARGC1/PGC-1), a protein that can activate mitochondrial biogenesis in part through a direct interaction with nuclear respiratory factor 1 (NRF1). This protein has been shown to interact with NRF1. It is thought to be a functional relative of PPAR-gamma coactivator 1 that activates mitochondrial biogenesis through NRF1 in response to proliferative signals. Alternative splicing results in multiple transcript variants. [provided by RefSeq, Dec 2013],



Immunohistochemistry analysis of paraffin-embedded human brain tissue, using PPRC1 Antibody. The picture on the right is blocked with the synthesized peptide.