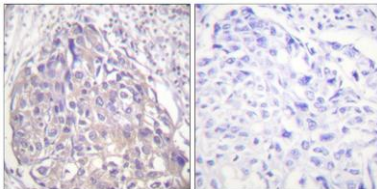


FoxO1/3/4 (phospho Thr24/32) rabbit pAb**Cat#: orb768180 (Manual)**

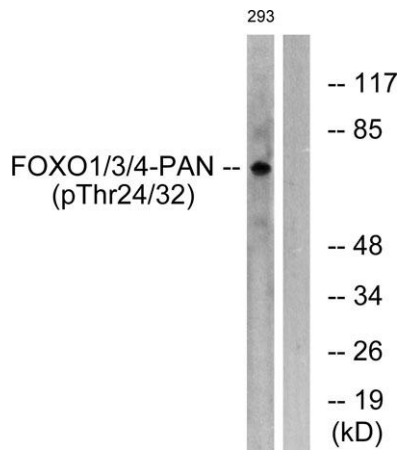
For research use only. Not intended for diagnostic use.

Product Name	FoxO1/3/4 (phospho Thr24/32) rabbit pAb
Host species	Rabbit
Applications	WB;IHC;IF;ELISA
Species Cross-Reactivity	Human;Mouse;Rat
Recommended dilutions	Western Blot: 1/500 - 1/2000. Immunohistochemistry: 1/100 - 1/300. ELISA: 1/5000. Not yet tested in other applications.
Immunogen	The antiserum was produced against synthesized peptide derived from human FOXO1/3/4-pan around the phosphorylation site of Thr24/32. AA range:15-64
Specificity	Phospho-FoxO1/3/4 (T24/32) Polyclonal Antibody detects endogenous levels of FoxO1/3/4 protein only when phosphorylated at T24/32.
Formulation	Liquid in PBS containing 50% glycerol, 0.5% BSA and 0.02% sodium azide..
Storage	Store at -20°C. Avoid repeated freeze-thaw cycles.
Protein Name	Forkhead box protein O1/3/4
Gene Name	FOXO1/3/4
Cellular localization	Cytoplasm . Nucleus . Shuttles between the cytoplasm and nucleus. Largely nuclear in unstimulated cells (PubMed:11311120, PubMed:12228231, PubMed:19221179, PubMed:21245099, PubMed:20543840, PubMed:25009184). In osteoblasts, colocalizes with ATF4 and RUNX2
Purification	The antibody was affinity-purified from rabbit antiserum by affinity-chromatography using epitope-specific immunogen.

Clonality	Polyclonal
Concentration	1 mg/ml
Observed band	78kD
Human Gene ID	2308/4303
Human Swiss-Prot Number	Q12778/O43524/P98177
Alternative Names	FOXO1; FKHR; FOXO1A; Forkhead box protein O1; Forkhead box protein O1A; Forkhead in rhabdomyosarcoma; FOXO3; FKHL1; FOXO3A; Forkhead box protein O3; AF6q21 protein; Forkhead in rhabdomyosarcoma-like 1; FOXO4; AFX; AFX1; MLLT7; Forkhead box
Background	This gene belongs to the forkhead family of transcription factors which are characterized by a distinct forkhead domain. The specific function of this gene has not yet been determined; however, it may play a role in myogenic growth and differentiation. Translocation of this gene with PAX3 has been associated with alveolar rhabdomyosarcoma. [provided by RefSeq, Jul 2008],



Immunohistochemistry analysis of paraffin-embedded human breast carcinoma, using FOXO1/3/4-pan (Phospho-Thr24/32) Antibody. The picture on the right is blocked with the phospho peptide.



Western blot analysis of lysates from 293 cells treated with Serum 20% 15', using FOXO1/3/4-pan (Phospho-Thr24/32) Antibody. The lane on the right is blocked with the phospho peptide.