

FoxJ1 rabbit pAb**Cat#: orb768165 (Manual)**

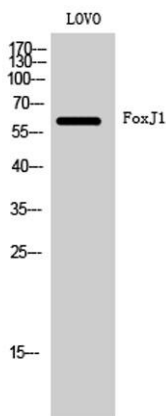
For research use only. Not intended for diagnostic use.

Product Name	FoxJ1 rabbit pAb
Host species	Rabbit
Applications	WB;IHC;IF;ELISA
Species Cross-Reactivity	Human;Mouse;Rat
Recommended dilutions	Western Blot: 1/500 - 1/2000. Immunohistochemistry: 1/100 - 1/300. ELISA: 1/20000. Not yet tested in other applications.
Immunogen	The antiserum was produced against synthesized peptide derived from human FOXJ1. AA range:271-320
Specificity	FoxJ1 Polyclonal Antibody detects endogenous levels of FoxJ1 protein.
Formulation	Liquid in PBS containing 50% glycerol, 0.5% BSA and 0.02% sodium azide..
Storage	Store at -20°C. Avoid repeated freeze-thaw cycles.
Protein Name	Forkhead box protein J1
Gene Name	FOXJ1
Cellular localization	Nucleus .
Purification	The antibody was affinity-purified from rabbit antiserum by affinity-chromatography using epitope-specific immunogen.
Clonality	Polyclonal

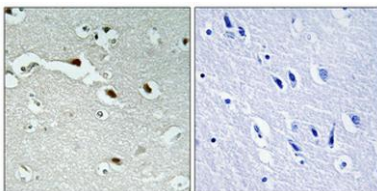
Concentration	1 mg/ml
Observed band	60kD
Human Gene ID	2302
Human Swiss-Prot Number	Q92949
Alternative Names	FOXJ1; FKHL13; HFH4; Forkhead box protein J1; Forkhead-related protein FKHL13; Hepatocyte nuclear factor 3 forkhead homolog 4; HFH-4

Background

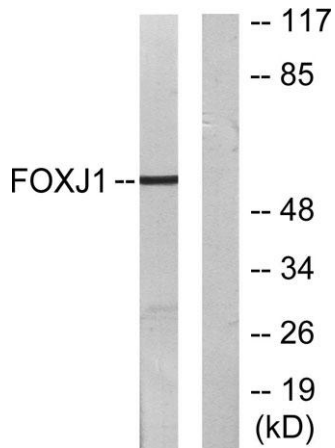
This gene encodes a member of the forkhead family of transcription factors. Similar genes in zebrafish and mouse have been shown to regulate the transcription of genes that control the production of motile cilia. The mouse ortholog also functions in the determination of left-right asymmetry. Polymorphisms in this gene are associated with systemic lupus erythematosus and allergic rhinitis.[provided by RefSeq, Sep 2009],



Western Blot analysis of LOVO cells using FoxJ1 Polyclonal Antibody cells nucleus extracted by Minute TM Cytoplasmic and Nuclear Fractionation kit (SC-003, Invent biotech, MN, USA).



Immunohistochemical analysis of paraffin-embedded Human brain. Antibody was diluted at 1:100 (4° overnight). High-pressure and temperature Tris-EDTA, pH 8.0 was used for antigen retrieval. Negative control (right) obtained from antibody was pre-absorbed by i



Western blot analysis of lysates from LOVO cells, using FOXJ1 Antibody. The lane on the right is blocked with the synthesized peptide.