

Raly rabbit pAb**Cat#: orb768146 (Manual)**

For research use only. Not intended for diagnostic use.

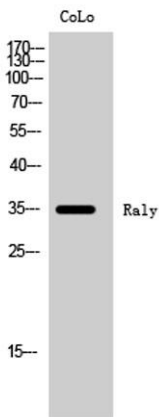
Product Name	Raly rabbit pAb
Host species	Rabbit
Applications	WB;IHC
Species Cross-Reactivity	Human;Mouse;Rat
Recommended dilutions	WB 1:500-2000;IHC-p 1:50-300
Immunogen	The antiserum was produced against synthesized peptide derived from human RALY. AA range:71-120
Specificity	Raly Polyclonal Antibody detects endogenous levels of Raly protein.
Formulation	Liquid in PBS containing 50% glycerol, 0.5% BSA and 0.02% sodium azide..
Storage	Store at -20°C. Avoid repeated freeze-thaw cycles.
Protein Name	RNA-binding protein Raly
Gene Name	RALY
Cellular localization	Nucleus .
Purification	The antibody was affinity-purified from rabbit antiserum by affinity-chromatography using epitope-specific immunogen.
Clonality	Polyclonal

Explore. Bioreagents.

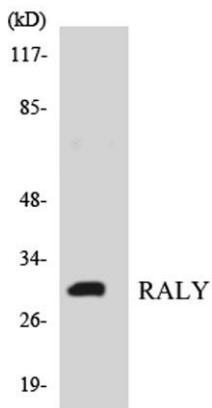
Concentration	1 mg/ml
Observed band	35kD
Human Gene ID	22913
Human Swiss-Prot Number	Q9UKM9
Alternative Names	RALY; HNRPCL2; P542; RNA-binding protein Raly; Autoantigen p542; Heterogeneous nuclear ribonucleoprotein C-like 2; hnRNP core protein C-like 2; hnRNP associated with lethal yellow protein homolog

Background

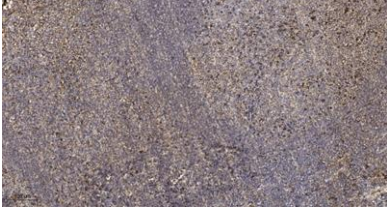
This gene encodes a member of the heterogeneous nuclear ribonucleoprotein (hnRNP) gene family. This protein may play a role in pre-mRNA splicing and in embryonic development. Alternate splicing results in multiple transcript variants. [provided by RefSeq, Sep 2011],



Western Blot analysis of CoLo cells using Raly Polyclonal Antibody cells nucleus extracted by Minute TM Cytoplasmic and Nuclear Fractionation kit (SC-003, Inventbiotech, MN, USA).



Western blot analysis of the lysates from HT-29 cells using RALY antibody.



Immunohistochemical analysis of paraffin-embedded human tonsil. 1, Antibody was diluted at 1:200(4° overnight). 2, Tris-EDTA,pH9.0 was used for antigen retrieval. 3,Secondary antibody was diluted at 1:200(room temperature, 45min).