

Rab11-FIP2 rabbit pAb**Cat#: orb768134 (Manual)**

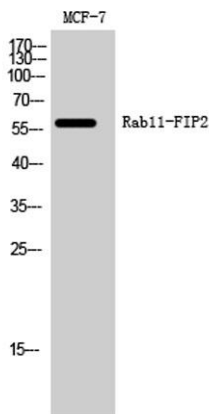
For research use only. Not intended for diagnostic use.

Product Name	Rab11-FIP2 rabbit pAb
Host species	Rabbit
Applications	WB;ELISA;IHC
Species Cross-Reactivity	Human;Mouse
Recommended dilutions	WB 1:500-2000;IHC-p 1:50-300; ELISA 2000-20000
Immunogen	The antiserum was produced against synthesized peptide derived from human RAB11FIP2. AA range:340-389
Specificity	Rab11-FIP2 Polyclonal Antibody detects endogenous levels of Rab11-FIP2 protein.
Formulation	Liquid in PBS containing 50% glycerol, 0.5% BSA and 0.02% sodium azide..
Storage	Store at -20°C. Avoid repeated freeze-thaw cycles.
Protein Name	Rab11 family-interacting protein 2
Gene Name	RAB11FIP2
Cellular localization	Cell projection, phagocytic cup . Cell membrane; Peripheral membrane protein. Recycling endosome membrane; Peripheral membrane protein. Translocates with RAB11A from the vesicles of the endocytic recycling compartment (ERC) to the plasma membrane.
Purification	The antibody was affinity-purified from rabbit antiserum by affinity-chromatography using epitope-specific immunogen.

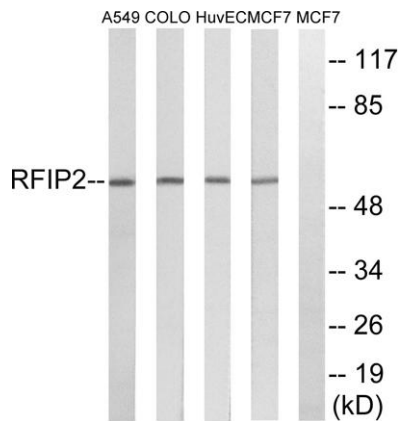
Clonality	Polyclonal
Concentration	1 mg/ml
Observed band	58kD
Human Gene ID	22841
Human Swiss-Prot Number	Q7L804
Alternative Names	RAB11FIP2; KIAA0941; Rab11 family-interacting protein 2; Rab11-FIP2; NRip11

Background

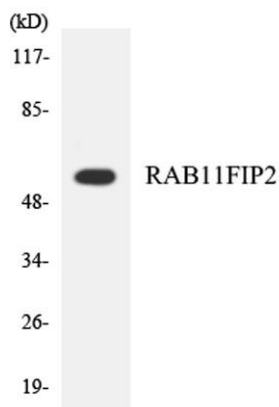
function: A Rab11 effector protein acting in the regulation of the transport of vesicles from the endosomal recycling compartment (ERC) to the plasma membrane. Also involved in receptor-mediated endocytosis and membrane trafficking of recycling endosomes, probably originating from clathrin-coated vesicles. Binds preferentially to phosphatidylinositol 3,4,5-trisphosphate (PtdInsP3) and phosphatidic acid (PA)., similarity: Contains 1 C2 domain., subcellular location: Translocates with RAB11A from the vesicles of the endocytic recycling compartment (ERC) to the plasma membrane., subunit: Homooligomerizes in a Rab11-independent manner. Forms an heterooligomeric complex with RAB11FIP4. Interacts with AP2A1, MYO5B, RAB11A, RAB11B, RAB25 and REPS1. Interacts with RAB11A/RAB11B that has been activated by GTP binding.,



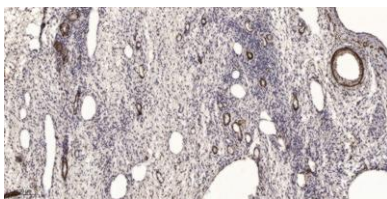
Western Blot analysis of MCF-7 cells using Rab11-FIP2 Polyclonal Antibody



Western blot analysis of lysates from MCF-7, HUVEC, A549, and COLO cells, using RAB11FIP2 Antibody. The lane on the right is blocked with the synthesized peptide.



Western blot analysis of the lysates from HepG2 cells using RAB11FIP2 antibody.



Immunohistochemical analysis of paraffin-embedded human oophoroma. 1, Antibody was diluted at 1:200(4° overnight). 2, Tris-EDTA,pH9.0 was used for antigen retrieval. 3,Secondary antibody was diluted at 1:200(room temperature, 45min).