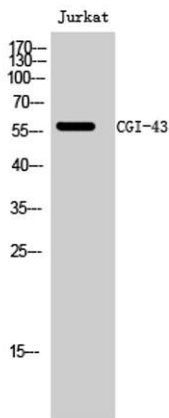


CGI-43 rabbit pAb**Cat#: orb768109 (Manual)**

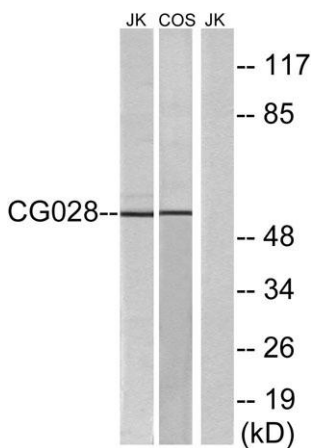
For research use only. Not intended for diagnostic use.

Product Name	CGI-43 rabbit pAb
Host species	Rabbit
Applications	WB;ELISA
Species Cross-Reactivity	Human;Mouse;Monkey
Recommended dilutions	Western Blot: 1/500 - 1/2000. ELISA: 1/10000. Not yet tested in other applications.
Immunogen	The antiserum was produced against synthesized peptide derived from human CG028. AA range:411-460
Specificity	CGI-43 Polyclonal Antibody detects endogenous levels of CGI-43 protein.
Formulation	Liquid in PBS containing 50% glycerol, 0.5% BSA and 0.02% sodium azide..
Storage	Store at -20°C. Avoid repeated freeze-thaw cycles.
Protein Name	Vacuolar fusion protein CCZ1 homolog/Vacuolar fusion protein CCZ1 homolog-like
Gene Name	CCZ1/C7orf28B
Cellular localization	Lysosome membrane .
Purification	The antibody was affinity-purified from rabbit antiserum by affinity-chromatography using epitope-specific immunogen.
Clonality	Polyclonal

Concentration	1 mg/ml
Observed band	56kD
Human Gene ID	221960
Human Swiss-Prot Number	P86791/P86790
Alternative Names	CCZ1; C7orf28A; CGI-43; Vacuolar fusion protein CCZ1 homolog; CCZ1B; C7orf28B; Vacuolar fusion protein CCZ1 homolog B; Vacuolar fusion protein CCZ1 homolog-like
Background	similarity:Belongs to the UPF0550 family.,



Western Blot analysis of Jurkat cells using CGI-43 Polyclonal Antibody diluted at 1:500



Western blot analysis of lysates from Jurkat and COS cells, using CG028 Antibody. The lane on the right is blocked with the synthesized peptide.