

**Fibulin-3 rabbit pAb****Cat#: orb768098 (Manual)**

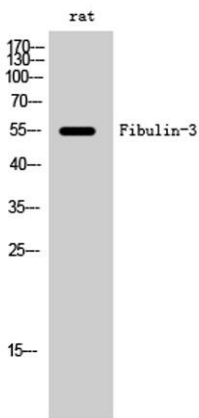
For research use only. Not intended for diagnostic use.

<b>Product Name</b>	Fibulin-3 rabbit pAb
<b>Host species</b>	Rabbit
<b>Applications</b>	WB;IHC;IF;ELISA
<b>Species Cross-Reactivity</b>	Human;Mouse;Rat
<b>Recommended dilutions</b>	Western Blot: 1/500 - 1/2000. Immunohistochemistry: 1/100 - 1/300. ELISA: 1/10000. Not yet tested in other applications.
<b>Immunogen</b>	The antiserum was produced against synthesized peptide derived from human EFEMP1. AA range:111-160
<b>Specificity</b>	Fibulin-3 Polyclonal Antibody detects endogenous levels of Fibulin-3 protein.
<b>Formulation</b>	Liquid in PBS containing 50% glycerol, 0.5% BSA and 0.02% sodium azide..
<b>Storage</b>	Store at -20°C. Avoid repeated freeze-thaw cycles.
<b>Protein Name</b>	EGF-containing fibulin-like extracellular matrix protein 1
<b>Gene Name</b>	EFEMP1
<b>Cellular localization</b>	Secreted, extracellular space . Secreted, extracellular space, extracellular matrix . Localizes to the lamina propria underneath the olfactory epithelium. .
<b>Purification</b>	The antibody was affinity-purified from rabbit antiserum by affinity-chromatography using epitope-specific immunogen.
<b>Clonality</b>	Polyclonal

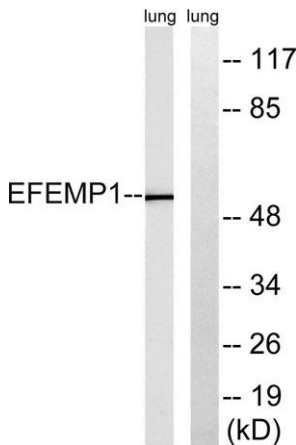
<b>Concentration</b>	1 mg/ml
<b>Observed band</b>	55kD
<b>Human Gene ID</b>	2202
<b>Human Swiss-Prot Number</b>	Q12805
<b>Alternative Names</b>	EFEMP1; FBLN3; FBNL; EGF-containing fibulin-like extracellular matrix protein 1; Extracellular protein S1-5; Fibrillin-like protein; Fibulin-3; FIBL-3

**Background**

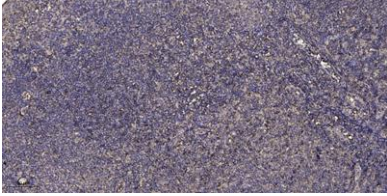
This gene encodes a member of the fibulin family of extracellular matrix glycoproteins. Like all members of this family, the encoded protein contains tandemly repeated epidermal growth factor-like repeats followed by a C-terminus fibulin-type domain. This gene is upregulated in malignant gliomas and may play a role in the aggressive nature of these tumors. Mutations in this gene are associated with Doyme honeycomb retinal dystrophy. Alternatively spliced transcript variants that encode the same protein have been described.[provided by RefSeq, Nov 2009],



**Western Blot analysis of rat cells using Fibulin-3 Polyclonal Antibody**



**Western blot analysis of lysates from rat lung, using EFEMP1 Antibody. The lane on the right is blocked with the synthesized peptide.**



**Immunohistochemical analysis of paraffin-embedded human tonsil. 1, Antibody was diluted at 1:200(4° overnight). 2, Tris-EDTA,pH9.0 was used for antigen retrieval. 3,Secondary antibody was diluted at 1:200(room temperature, 30min).**