

**ERF (phospho Thr526) rabbit pAb****Cat#: orb768043 (Manual)**

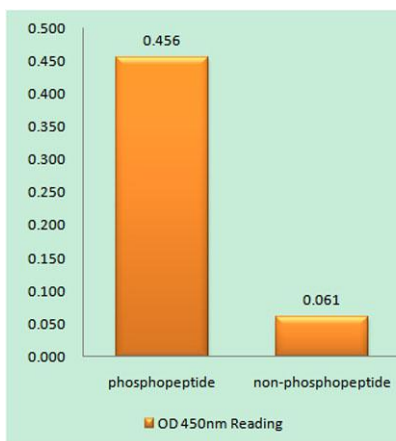
For research use only. Not intended for diagnostic use.

<b>Product Name</b>	ERF (phospho Thr526) rabbit pAb
<b>Host species</b>	Rabbit
<b>Applications</b>	WB;IHC;IF;ELISA
<b>Species Cross-Reactivity</b>	Human;Mouse
<b>Recommended dilutions</b>	Western Blot: 1/500 - 1/2000. Immunohistochemistry: 1/100 - 1/300. Immunofluorescence: 1/200 - 1/1000. ELISA: 1/20000. Not yet tested in other applications.
<b>Immunogen</b>	The antiserum was produced against synthesized peptide derived from human ERF around the phosphorylation site of Thr526. AA range:492-541
<b>Specificity</b>	Phospho-ERF (T526) Polyclonal Antibody detects endogenous levels of ERF protein only when phosphorylated at T526.
<b>Formulation</b>	Liquid in PBS containing 50% glycerol, 0.5% BSA and 0.02% sodium azide..
<b>Storage</b>	Store at -20°C. Avoid repeated freeze-thaw cycles.
<b>Protein Name</b>	ETS domain-containing transcription factor ERF
<b>Gene Name</b>	ERF
<b>Cellular localization</b>	Nucleus.
<b>Purification</b>	The antibody was affinity-purified from rabbit antiserum by affinity-chromatography using epitope-specific immunogen.
<b>Clonality</b>	Polyclonal

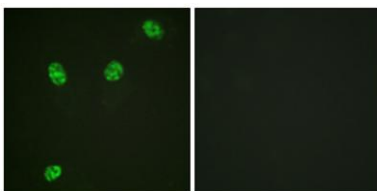
<b>Concentration</b>	1 mg/ml
<b>Observed band</b>	58kD
<b>Human Gene ID</b>	2077
<b>Human Swiss-Prot Number</b>	P50548
<b>Alternative Names</b>	ERF; ETS domain-containing transcription factor ERF; Ets2 repressor factor; PE-2

## Background

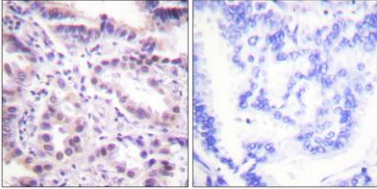
ETS2 is a transcription factor and protooncogene involved in development, apoptosis, and the regulation of telomerase. The protein encoded by this gene binds to the ETS2 promoter and is a strong repressor of ETS2 transcription. Several transcript variants encoding two different isoforms have been found for this gene. [provided by RefSeq, Aug 2015],



**Enzyme-Linked Immunosorbent Assay (Phospho-ELISA) for Immunogen Phosphopeptide (Phospho-left) and Non-Phosphopeptide (Phospho-right), using ERF (Phospho-Thr526) Antibody**



**Immunofluorescence analysis of HeLa cells, using ERF (Phospho-Thr526) Antibody. The picture on the right is blocked with the phospho peptide.**



**Immunohistochemistry analysis of paraffin-embedded human lung carcinoma, using ERF (Phospho-Thr526) Antibody. The picture on the right is blocked with the phospho peptide.**