

Eps15 (phospho Tyr849) rabbit pAb**Cat#: orb768015 (Manual)**

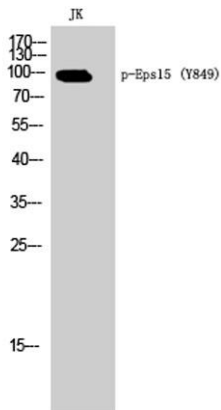
For research use only. Not intended for diagnostic use.

Product Name	Eps15 (phospho Tyr849) rabbit pAb
Host species	Rabbit
Applications	WB;ELISA
Species Cross-Reactivity	Human;Mouse;Rat
Recommended dilutions	Western Blot: 1/500 - 1/2000. ELISA: 1/10000. Not yet tested in other applications.
Immunogen	Synthesized phospho-peptide around the phosphorylation site of human Eps15 (phospho Tyr849)
Specificity	Phospho-Eps15 (Y849) Polyclonal Antibody detects endogenous levels of Eps15 protein only when phosphorylated at Y849.
Formulation	Liquid in PBS containing 50% glycerol, 0.5% BSA and 0.02% sodium azide..
Storage	Store at -20°C. Avoid repeated freeze-thaw cycles.
Protein Name	Epidermal growth factor receptor substrate 15
Gene Name	EPS15
Cellular localization	Cytoplasm. Cell membrane; Peripheral membrane protein; Cytoplasmic side. Membrane, clathrin-coated pit. Recruited to the plasma membrane upon EGFR activation and localizes to coated pits. Colocalizes with UBQLN1 in ubiquitin-rich cytoplasmic aggregates that are not endocytic compartments and in cytoplasmic juxtannuclear structures called aggresomes. .; [Isoform 2]: Early endosome membrane ; Peripheral membrane protein ; Cytoplasmic side . Colocalizes with HGS on bilayered clathrin coats on endosomes.

Purification	The antibody was affinity-purified from rabbit antiserum by affinity-chromatography using epitope-specific immunogen.
Clonality	Polyclonal
Concentration	1 mg/ml
Observed band	100kD
Human Gene ID	2060
Human Swiss-Prot Number	P42566
Alternative Names	EPS15; AF1P; Epidermal growth factor receptor substrate 15; Protein Eps15; Protein AF-1p

Background

This gene encodes a protein that is part of the EGFR pathway. The protein is present at clatherin-coated pits and is involved in receptor-mediated endocytosis of EGF. Notably, this gene is rearranged with the HRX/ALL/MLL gene in acute myelogenous leukemias. Alternative splicing results in multiple transcript variants encoding distinct isoforms. [provided by RefSeq, May 2009],



Western Blot analysis of JK cells using Phospho-Eps15 (Y849) Polyclonal Antibody