

**Net (phospho Ser357) rabbit pAb****Cat#: orb767976 (Manual)**

For research use only. Not intended for diagnostic use.

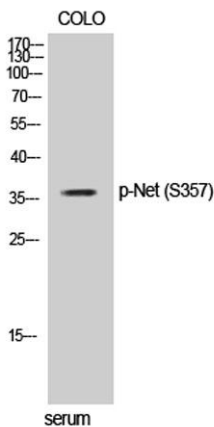
<b>Product Name</b>	Net (phospho Ser357) rabbit pAb
<b>Host species</b>	Rabbit
<b>Applications</b>	WB;IHC;IF;ELISA
<b>Species Cross-Reactivity</b>	Human;Mouse;Monkey
<b>Recommended dilutions</b>	Western Blot: 1/500 - 1/2000. Immunohistochemistry: 1/100 - 1/300. Immunofluorescence: 1/200 - 1/1000. ELISA: 1/20000. Not yet tested in other applications.
<b>Immunogen</b>	The antiserum was produced against synthesized peptide derived from human Elk3 around the phosphorylation site of Ser357. AA range:323-372
<b>Specificity</b>	Phospho-Net (S357) Polyclonal Antibody detects endogenous levels of Net protein only when phosphorylated at S357.
<b>Formulation</b>	Liquid in PBS containing 50% glycerol, 0.5% BSA and 0.02% sodium azide..
<b>Storage</b>	Store at -20°C. Avoid repeated freeze-thaw cycles.
<b>Protein Name</b>	ETS domain-containing protein Elk-3
<b>Gene Name</b>	ELK3
<b>Cellular localization</b>	Nucleus.
<b>Purification</b>	The antibody was affinity-purified from rabbit antiserum by affinity-chromatography using epitope-specific immunogen.
<b>Clonality</b>	Polyclonal

Explore. Bioreagents.

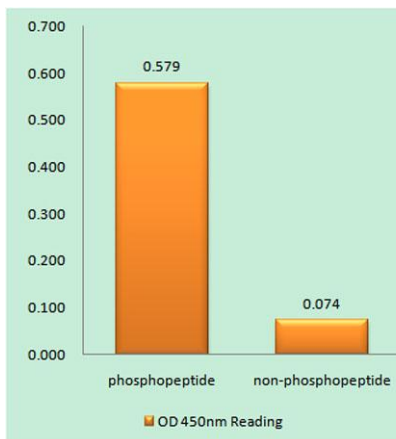
<b>Concentration</b>	1 mg/ml
<b>Observed band</b>	38kD
<b>Human Gene ID</b>	2004
<b>Human Swiss-Prot Number</b>	P41970
<b>Alternative Names</b>	ELK3; NET; SAP2; ETS domain-containing protein Elk-3; ETS-related protein ERP; ETS-related protein NET; Serum response factor accessory protein 2; SAP-2; SRF accessory protein 2

**Background**

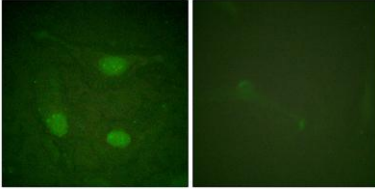
This gene encodes a member of the ETS-domain transcription factor family and the ternary complex factor (TCF) subfamily. Proteins in this subfamily regulate transcription when recruited by serum response factor to bind to serum response elements. This protein is activated by signal-induced phosphorylation; studies in rodents suggest that it is a transcriptional inhibitor in the absence of Ras, but activates transcription when Ras is present. Alternate splicing results in multiple transcript variants. [provided by RefSeq, Jan 2015],



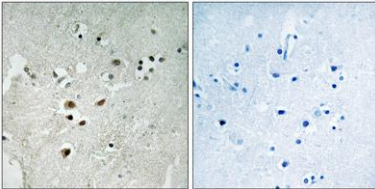
**Western Blot analysis of COLO cells using Phospho-Net (S357) Polyclonal Antibody**



**Enzyme-Linked Immunosorbent Assay (Phospho-ELISA) for Immunogen Phosphopeptide (Phospho-left) and Non-Phosphopeptide (Phospho-right), using Elk3 (Phospho-Ser357) Antibody**



**Immunofluorescence analysis of HeLa cells, using Elk3 (Phospho-Ser357) Antibody. The picture on the right is blocked with the phospho peptide.**



**Immunohistochemistry analysis of paraffin-embedded human brain, using Elk3 (Phospho-Ser357) Antibody. The picture on the right is blocked with the phospho peptide.**