

Ephrin-B1/2/3 (phospho Tyr324) rabbit pAb**Cat#: orb767922 (Manual)**

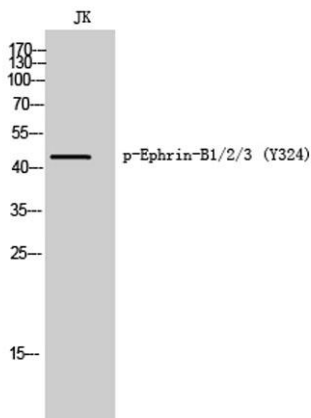
For research use only. Not intended for diagnostic use.

Product Name	Ephrin-B1/2/3 (phospho Tyr324) rabbit pAb
Host species	Rabbit
Applications	WB;IHC;IF;ELISA
Species Cross-Reactivity	Human;Mouse;Rat
Recommended dilutions	Western Blot: 1/500 - 1/2000. Immunohistochemistry: 1/100 - 1/300. ELISA: 1/20000. Not yet tested in other applications.
Immunogen	The antiserum was produced against synthesized peptide derived from human Ephrin B1/B2/B3 around the phosphorylation site of Tyr324. AA range:290-339
Specificity	Phospho-Ephrin-B1/2/3 (Y324) Polyclonal Antibody detects endogenous levels of Ephrin-B1/2/3 protein only when phosphorylated at Y324.
Formulation	Liquid in PBS containing 50% glycerol, 0.5% BSA and 0.02% sodium azide..
Storage	Store at -20°C. Avoid repeated freeze-thaw cycles.
Protein Name	Ephrin-B1/2/3
Gene Name	EFNB1/EFNB2/EFNB3
Cellular localization	Cell membrane ; Single-pass type I membrane protein . Membrane raft . May recruit GRIP1 and GRIP2 to membrane raft domains. . ; [Ephrin-B1 C-terminal fragment]: Cell membrane ; Single-pass type I membrane protein . ; [Ephrin-B1 intracellular domain]: Nucleus . Colocalizes with ZHX2 in the nucleus. .
Purification	The antibody was affinity-purified from rabbit antiserum by affinity-chromatography using epitope-specific immunogen.

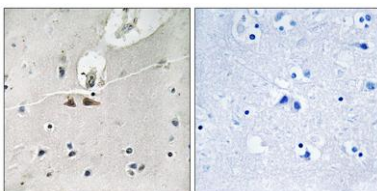
Clonality	Polyclonal
Concentration	1 mg/ml
Observed band	46kD
Human Gene ID	1947/1948/1949
Human Swiss-Prot Number	P98172/P52799/Q15768
Alternative Names	EFNB1; EFL3; EPLG2; LERK2; Ephrin-B1; EFL-3; ELK ligand; ELK-L; EPH-related receptor tyrosine kinase ligand 2; LERK-2; EFNB2; EPLG5; HTKL; LERK5; Ephrin-B2; EPH-related receptor tyrosine kinase ligand 5; LERK-5; HTK ligand; HTK-L; EFNB3; EP

Background

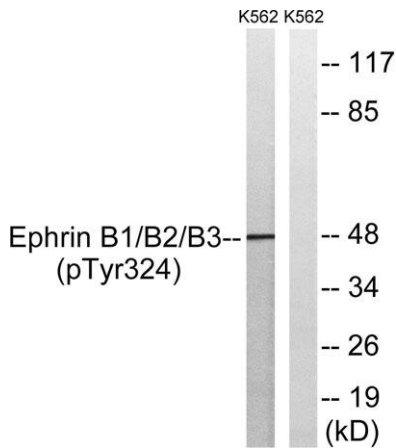
The protein encoded by this gene is a type I membrane protein and a ligand of Eph-related receptor tyrosine kinases. It may play a role in cell adhesion and function in the development or maintenance of the nervous system. [provided by RefSeq, Jul 2008].



Western Blot analysis of JK cells using Phospho-Ephrin-B1/2/3 (Y324) Polyclonal Antibody



Immunohistochemistry analysis of paraffin-embedded human brain, using Ephrin B1/B2/B3 (Phospho-Tyr324) Antibody. The picture on the right is blocked with the phospho peptide.



Western blot analysis of lysates from K562 cells treated with serum 20% 15', using Ephrin B1/B2/B3 (Phospho-Tyr324) Antibody. The lane on the right is blocked with the phospho peptide.