

EDG-1 (phospho Thr236) rabbit pAb**Cat#: orb767915 (Manual)**

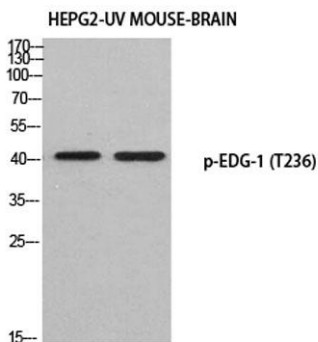
For research use only. Not intended for diagnostic use.

Product Name	EDG-1 (phospho Thr236) rabbit pAb
Host species	Rabbit
Applications	WB;IF;ELISA
Species Cross-Reactivity	Human;Mouse;Rat
Recommended dilutions	Immunofluorescence: 1/200 - 1/1000. ELISA: 1/10000. Not yet tested in other applications.
Immunogen	The antiserum was produced against synthesized peptide derived from human S1P Receptor EDG1 around the phosphorylation site of Thr236. AA range:206-255
Specificity	Phospho-EDG-1 (T236) Polyclonal Antibody detects endogenous levels of EDG-1 protein only when phosphorylated at T236.
Formulation	Liquid in PBS containing 50% glycerol, 0.5% BSA and 0.02% sodium azide..
Storage	Store at -20°C. Avoid repeated freeze-thaw cycles.
Protein Name	Sphingosine 1-phosphate receptor 1
Gene Name	S1PR1
Cellular localization	Cell membrane ; Multi-pass membrane protein. Endosome. Membrane raft. Recruited to caveolin-enriched plasma membrane microdomains in response to oxidized 1-palmitoyl-2-arachidonoyl-sn-glycero-3-phosphocholine. Ligand binding leads to receptor internalization.
Purification	The antibody was affinity-purified from rabbit antiserum by affinity-chromatography using epitope-specific immunogen.

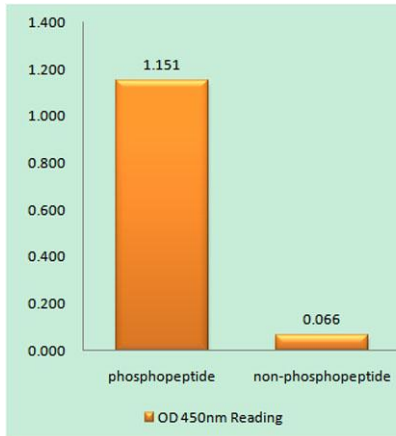
Clonality	Polyclonal
Concentration	1 mg/ml
Observed band	42kD
Human Gene ID	1901
Human Swiss-Prot Number	P21453
Alternative Names	S1PR1; CHEDG1; EDG1; Sphingosine 1-phosphate receptor 1; S1P receptor 1; S1P1; Endothelial differentiation G-protein coupled receptor 1; Sphingosine 1-phosphate receptor Edg-1; S1P receptor Edg-1; CD antigen CD363

Background

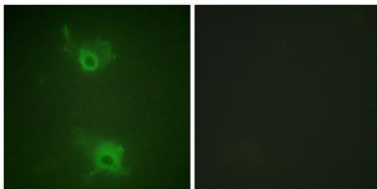
The protein encoded by this gene is structurally similar to G protein-coupled receptors and is highly expressed in endothelial cells. It binds the ligand sphingosine-1-phosphate with high affinity and high specificity, and suggested to be involved in the processes that regulate the differentiation of endothelial cells. Activation of this receptor induces cell-cell adhesion. Alternative splicing results in multiple transcript variants. [provided by RefSeq, Mar 2016],



Western blot analysis of HEPG2-UV MOUSE-BRAIN using p-EDG-1 (T236) antibody. Antibody was diluted at 1:500



Enzyme-Linked Immunosorbent Assay (Phospho-ELISA) for Immunogen Phosphopeptide (Phospho-left) and Non-Phosphopeptide (Phospho-right), using S1P Receptor EDG1 (Phospho-Thr236) Antibody



Immunofluorescence analysis of COS7 cells, using S1P Receptor EDG1 (Phospho-Thr236) Antibody. The picture on the right is blocked with the phospho peptide.