

CRMP-2 (phospho Thr514) rabbit pAb**Cat#: orb767897 (Manual)**

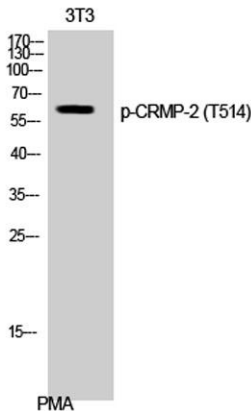
For research use only. Not intended for diagnostic use.

Product Name	CRMP-2 (phospho Thr514) rabbit pAb
Host species	Rabbit
Applications	WB;IHC;IF;ELISA
Species Cross-Reactivity	Human;Mouse;Rat
Recommended dilutions	Western Blot: 1/500 - 1/2000. Immunohistochemistry: 1/100 - 1/300. Immunofluorescence: 1/200 - 1/1000. ELISA: 1/5000. Not yet tested in other applications.
Immunogen	The antiserum was produced against synthesized peptide derived from human DRP-2 around the phosphorylation site of Thr514. AA range:480-529
Specificity	Phospho-CRMP-2 (T514) Polyclonal Antibody detects endogenous levels of CRMP-2 protein only when phosphorylated at T514.
Formulation	Liquid in PBS containing 50% glycerol, 0.5% BSA and 0.02% sodium azide..
Storage	Store at -20°C. Avoid repeated freeze-thaw cycles.
Protein Name	Dihydropyrimidinase-related protein 2
Gene Name	DPYSL2
Cellular localization	Cytoplasm, cytosol . Cytoplasm, cytoskeleton . Membrane . Tightly but non-covalently associated with membranes.
Purification	The antibody was affinity-purified from rabbit antiserum by affinity-chromatography using epitope-specific immunogen.
Clonality	Polyclonal

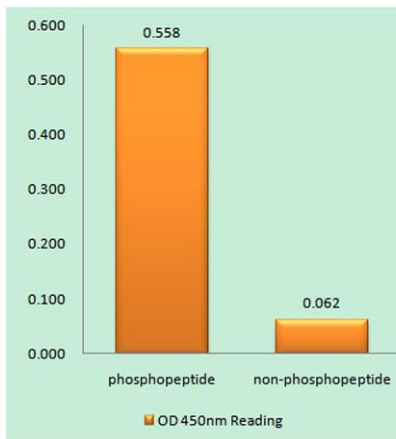
Concentration	1 mg/ml
Observed band	65kD
Human Gene ID	1808
Human Swiss-Prot Number	Q16555
Alternative Names	DPYSL2; CRMP2; ULIP2; Dihydropyrimidinase-related protein 2; DRP-2; Collapsin response mediator protein 2; CRMP-2; N2A3; Unc-33-like phosphoprotein 2; ULIP-2

Background

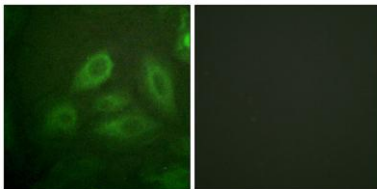
This gene encodes a member of the collapsin response mediator protein family. Collapsin response mediator proteins form homo- and heterotetramers and facilitate neuron guidance, growth and polarity. The encoded protein promotes microtubule assembly and is required for Sema3A-mediated growth cone collapse, and also plays a role in synaptic signaling through interactions with calcium channels. This gene has been implicated in multiple neurological disorders, and hyperphosphorylation of the encoded protein may play a key role in the development of Alzheimer's disease. Alternatively spliced transcript variants encoding multiple isoforms have been observed for this gene. [provided by RefSeq, Sep 2011],



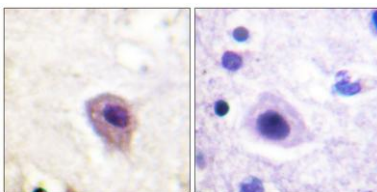
Western Blot analysis of 3T3 cells using Phospho-CRMP-2 (T514) Polyclonal Antibody



Enzyme-Linked Immunosorbent Assay (Phospho-ELISA) for Immunogen Phosphopeptide (Phospho-left) and Non-Phosphopeptide (Phospho-right), using DRP-2 (Phospho-Thr514) Antibody



Immunofluorescence analysis of HeLa cells, using DRP-2 (Phospho-Thr514) Antibody. The picture on the right is blocked with the phospho peptide.



Immunohistochemistry analysis of paraffin-embedded human brain, using DRP-2 (Phospho-Thr514) Antibody. The picture on the right is blocked with the phospho peptide.