

Dok-1 (phospho Tyr398) rabbit pAb**Cat#: orb767892 (Manual)**

For research use only. Not intended for diagnostic use.

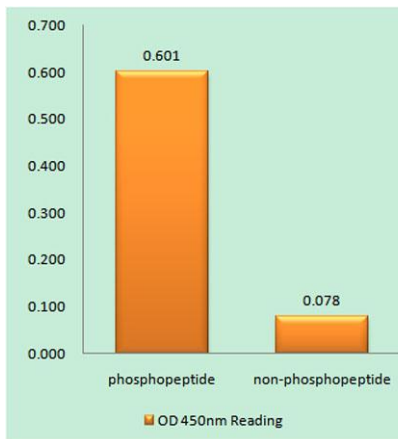
Product Name	Dok-1 (phospho Tyr398) rabbit pAb
Host species	Rabbit
Applications	WB;ELISA
Species Cross-Reactivity	Human;Mouse;Rat
Recommended dilutions	Western Blot: 1/500 - 1/2000. ELISA: 1/20000. Not yet tested in other applications.
Immunogen	The antiserum was produced against synthesized peptide derived from human p62 Dok around the phosphorylation site of Tyr398. AA range:365-414
Specificity	Phospho-Dok-1 (Y398) Polyclonal Antibody detects endogenous levels of Dok-1 protein only when phosphorylated at Y398.
Formulation	Liquid in PBS containing 50% glycerol, 0.5% BSA and 0.02% sodium azide..
Storage	Store at -20°C. Avoid repeated freeze-thaw cycles.
Protein Name	Docking protein 1
Gene Name	DOK1
Cellular localization	[Isoform 1]: Cytoplasm. Nucleus.; [Isoform 3]: Cytoplasm, perinuclear region.
Purification	The antibody was affinity-purified from rabbit antiserum by affinity-chromatography using epitope-specific immunogen.
Clonality	Polyclonal

Explore. Bioreagents.

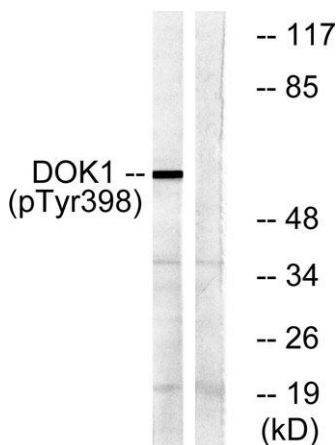
Concentration	1 mg/ml
Observed band	62kD
Human Gene ID	1796
Human Swiss-Prot Number	Q99704
Alternative Names	DOK1; Docking protein 1; Downstream of tyrosine kinase 1; p62(dok); pp62

Background

docking protein 1(DOK1) Homo sapiens The protein encoded by this gene is part of a signal transduction pathway downstream of receptor tyrosine kinases. The encoded protein is a scaffold protein that helps form a platform for the assembly of multiprotein signaling complexes. Several transcript variants encoding different isoforms have been found for this gene. [provided by RefSeq, Jan 2016],



Enzyme-Linked Immunosorbent Assay (Phospho-ELISA) for Immunogen Phosphopeptide (Phospho-left) and Non-Phosphopeptide (Phospho-right), using p62 Dok (Phospho-Tyr398) Antibody



Western blot analysis of lysates from K562 cells treated with Starvation 24h, using p62 Dok (Phospho-Tyr398) Antibody. The lane on the right is blocked with the phospho peptide.