

DOCK 180 rabbit pAb**Cat#: orb767890 (Manual)**

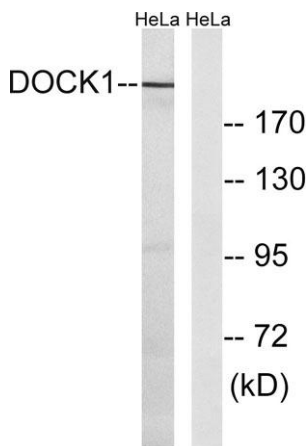
For research use only. Not intended for diagnostic use.

Product Name	DOCK 180 rabbit pAb
Host species	Rabbit
Applications	WB;ELISA
Species Cross-Reactivity	Human;Mouse
Recommended dilutions	Western Blot: 1/500 - 1/2000. ELISA: 1/40000. Not yet tested in other applications.
Immunogen	The antiserum was produced against synthesized peptide derived from human DOCK1. AA range:1661-1710
Specificity	DOCK 180 Polyclonal Antibody detects endogenous levels of DOCK 180 protein.
Formulation	Liquid in PBS containing 50% glycerol, 0.5% BSA and 0.02% sodium azide..
Storage	Store at -20°C. Avoid repeated freeze-thaw cycles.
Protein Name	Dedicator of cytokinesis protein 1
Gene Name	DOCK1
Cellular localization	Cytoplasm . Membrane . Recruited to membranes via its interaction with phosphatidylinositol 3,4,5-trisphosphate. .
Purification	The antibody was affinity-purified from rabbit antiserum by affinity-chromatography using epitope-specific immunogen.
Clonality	Polyclonal

Concentration	1 mg/ml
Observed band	215kD
Human Gene ID	1793
Human Swiss-Prot Number	Q14185
Alternative Names	DOCK1; Deducator of cytokinesis protein 1; 180 kDa protein downstream of CRK; DOCK180

Background

This gene encodes a member of the dedicator of cytokinesis protein family. Deducator of cytokinesis proteins act as guanine nucleotide exchange factors for small Rho family G proteins. The encoded protein regulates the small GTPase Rac, thereby influencing several biological processes, including phagocytosis and cell migration. Overexpression of this gene has also been associated with certain cancers. Alternative splicing results in multiple transcript variants. [provided by RefSeq, Mar 2014].



Western blot analysis of lysates from HeLa cells, using DOCK1 Antibody. The lane on the right is blocked with the synthesized peptide.