

Desmin (phospho Ser60) rabbit pAb**Cat#: orb767867 (Manual)**

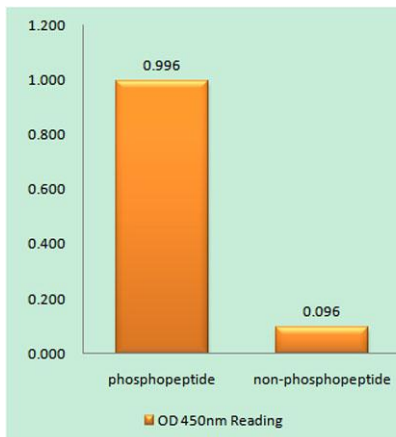
For research use only. Not intended for diagnostic use.

Product Name	Desmin (phospho Ser60) rabbit pAb
Host species	Rabbit
Applications	IHC;IF;ELISA
Species Cross-Reactivity	Human;Mouse;Rat
Recommended dilutions	Immunohistochemistry: 1/100 - 1/300. ELISA: 1/20000. Not yet tested in other applications.
Immunogen	The antiserum was produced against synthesized peptide derived from human Desmin around the phosphorylation site of Ser60. AA range:26-75
Specificity	Phospho-Desmin (S60) Polyclonal Antibody detects endogenous levels of Desmin protein only when phosphorylated at S60.
Formulation	Liquid in PBS containing 50% glycerol, 0.5% BSA and 0.02% sodium azide..
Storage	Store at -20°C. Avoid repeated freeze-thaw cycles.
Protein Name	Desmin
Gene Name	DES
Cellular localization	Cytoplasmic
Purification	The antibody was affinity-purified from rabbit antiserum by affinity-chromatography using epitope-specific immunogen.
Clonality	Polyclonal

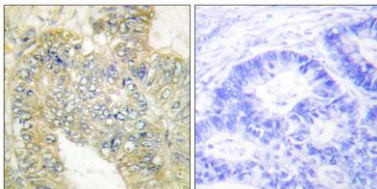
Concentration	1 mg/ml
Observed band	
Human Gene ID	1674
Human Swiss-Prot Number	P17661
Alternative Names	DES; Desmin

Background

This gene encodes a muscle-specific class III intermediate filament. Homopolymers of this protein form a stable intracytoplasmic filamentous network connecting myofibrils to each other and to the plasma membrane. Mutations in this gene are associated with desmin-related myopathy, a familial cardiac and skeletal myopathy (CSM), and with distal myopathies. [provided by RefSeq, Jul 2008],



Enzyme-Linked Immunosorbent Assay (Phospho-ELISA) for Immunogen Phosphopeptide (Phospho-left) and Non-Phosphopeptide (Phospho-right), using Desmin (Phospho-Ser60) Antibody



Immunohistochemistry analysis of paraffin-embedded human colon carcinoma, using Desmin (Phospho-Ser60) Antibody. The picture on the right is blocked with the phosphopeptide.