

CHST13 rabbit pAb**Cat#: orb767862 (Manual)**

For research use only. Not intended for diagnostic use.

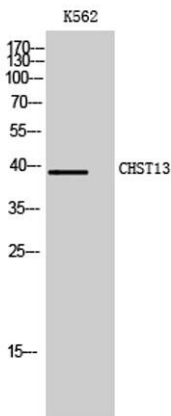
Product Name	CHST13 rabbit pAb
Host species	Rabbit
Applications	WB;IHC;IF;ELISA
Species Cross-Reactivity	Human;Rat;Mouse;
Recommended dilutions	Western Blot: 1/500 - 1/2000. Immunohistochemistry: 1/100 - 1/300. ELISA: 1/40000. Not yet tested in other applications.
Immunogen	The antiserum was produced against synthesized peptide derived from human CHST13. AA range:211-260
Specificity	CHST13 Polyclonal Antibody detects endogenous levels of CHST13 protein.
Formulation	Liquid in PBS containing 50% glycerol, 0.5% BSA and 0.02% sodium azide..
Storage	Store at -20°C. Avoid repeated freeze-thaw cycles.
Protein Name	Carbohydrate sulfotransferase 13
Gene Name	CHST13
Cellular localization	Golgi apparatus membrane ; Single-pass type II membrane protein .
Purification	The antibody was affinity-purified from rabbit antiserum by affinity-chromatography using epitope-specific immunogen.
Clonality	Polyclonal

Explore. Bioreagents.

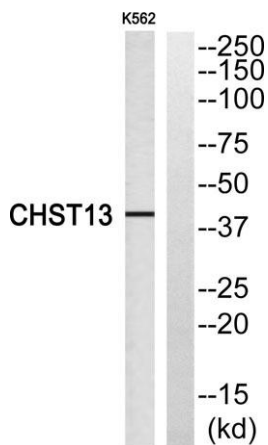
Concentration	1 mg/ml
Observed band	39kD
Human Gene ID	166012
Human Swiss-Prot Number	Q8NET6
Alternative Names	CHST13; Carbohydrate sulfotransferase 13; Chondroitin 4-O-sulfotransferase 3; Chondroitin 4-sulfotransferase 3; C4ST-3; C4ST3

Background

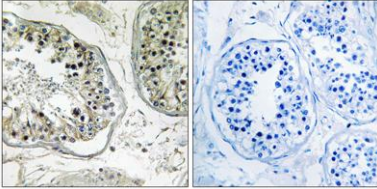
The protein encoded by this gene belongs to the sulfotransferase 2 family. It is localized to the golgi membrane, and catalyzes the transfer of sulfate to the C4 hydroxyl of beta-1,4-linked N-acetylgalactosamine (GalNAc) flanked by glucuronic acid residue in chondroitin. Chondroitin sulfate constitutes the predominant proteoglycan present in cartilage and is distributed on the surfaces of many cells and extracellular matrices. [provided by RefSeq, Aug 2011],



Western Blot analysis of K562 cells using CHST13 Polyclonal Antibody



Western blot analysis of CHST13 Antibody. The lane on the right is blocked with the CHST13 peptide.



Immunohistochemistry analysis of paraffin-embedded human testis, using CHST13 Antibody. The lane on the right is blocked with the CHST13 peptide.