

DDX3 rabbit pAb**Cat#: orb767860 (Manual)**

For research use only. Not intended for diagnostic use.

Product Name	DDX3 rabbit pAb
Host species	Rabbit
Applications	WB;ELISA
Species Cross-Reactivity	Human;Mouse
Recommended dilutions	Western Blot: 1/500 - 1/2000. ELISA: 1/10000. Not yet tested in other applications.
Immunogen	The antiserum was produced against synthesized peptide derived from N-terminal human DDX3. AA range:14-63
Specificity	DDX3 Polyclonal Antibody detects endogenous levels of DDX3 protein.
Formulation	Liquid in PBS containing 50% glycerol, 0.5% BSA and 0.02% sodium azide..
Storage	Store at -20°C. Avoid repeated freeze-thaw cycles.
Protein Name	ATP-dependent RNA helicase DDX3X/Y
Gene Name	DDX3X/DDX3Y
Cellular localization	Cell membrane . Nucleus . Cytoplasm . Cytoplasm, Stress granule . Inflammasome . Cell projection, lamellipodium . Cytoplasm, cytoskeleton, microtubule organizing center, centrosome . Shuttles between the nucleus and the cytosol (PubMed:15507209, PubMed:18636090, PubMed:29899501, PubMed:31575075, PubMed:30131165). Exported from the nucleus partly through the XPO1/CRM1 system and partly through NXF1/TAP (PubMed:15507209, PubMed:18636090, PubMed:18596238, PubMed:31575075, PubMed:30131165). Localizes to nuclear pores on the outer side of the nuclear membrane (PubMed:15507209). In the cytosol, partly colocalizes with mitochondria (PubMed:20127681). At G0, predominantly located in nucleus. In G1/S phase, predominantly cytoplasmic

(PubMed:22034099). During prophase/prometaphase, localizes in clos

Purification

The antibody was affinity-purified from rabbit antiserum by affinity-chromatography using epitope-specific immunogen.

Clonality

Polyclonal

Concentration

1 mg/ml

Observed band

73kD

Human Gene ID

1654/8653

Human Swiss-Prot Number

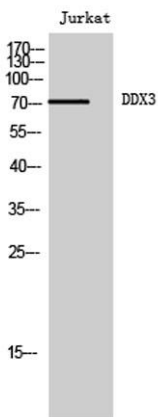
O00571/O15523

Alternative Names

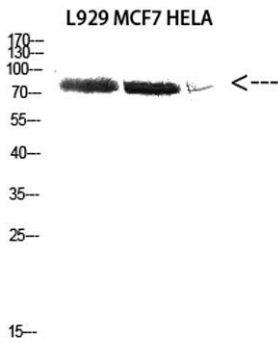
DDX3X; DBX; DDX3; ATP-dependent RNA helicase DDX3X; DEAD box protein 3; X-chromosomal; DEAD box, X isoform; Helicase-like protein 2; HLP2; DDX3Y; DBY; ATP-dependent RNA helicase DDX3Y; DEAD box protein 3, Y-chromosomal

Background

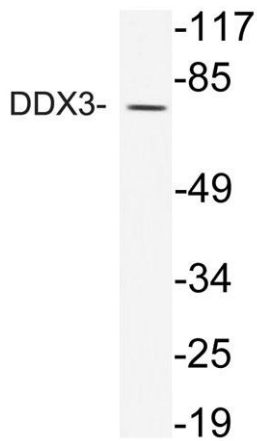
The protein encoded by this gene is a member of the large DEAD-box protein family, that is defined by the presence of the conserved Asp-Glu-Ala-Asp (DEAD) motif, and has ATP-dependent RNA helicase activity. This protein has been reported to display a high level of RNA-independent ATPase activity, and unlike most DEAD-box helicases, the ATPase activity is thought to be stimulated by both RNA and DNA. This protein has multiple conserved domains and is thought to play roles in both the nucleus and cytoplasm. Nuclear roles include transcriptional regulation, mRNP assembly, pre-mRNA splicing, and mRNA export. In the cytoplasm, this protein is thought to be involved in translation, cellular signaling, and viral replication. Misregulation of this gene has been implicated in tumorigenesis. This gene has a paralog located in the nonrecombining region of the Y chromosome. Pseudogenes sharing similarit



Western Blot analysis of Jurkat cells using DDX3 Polyclonal Antibody diluted at 1:2000



Western Blot analysis of L929 MCF7 HELA cells using Antibody diluted at 2000. Secondary antibody(catalog#:RS0002) was diluted at 1:20000



Western blot analysis of lysate from Jurkat cells, using DDX3 antibody.