

ACE1 rabbit pAb**Cat#: orb767848 (Manual)**

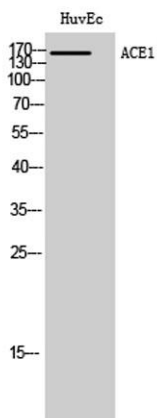
For research use only. Not intended for diagnostic use.

Product Name	ACE1 rabbit pAb
Host species	Rabbit
Applications	WB;IHC;IF;ELISA
Species Cross-Reactivity	Human;Mouse;Rat
Recommended dilutions	Western Blot: 1/500 - 1/2000. Immunohistochemistry: 1/100 - 1/300. ELISA: 1/10000. Not yet tested in other applications.
Immunogen	The antiserum was produced against synthesized peptide derived from human ACE1. AA range:891-940
Specificity	ACE1 Polyclonal Antibody detects endogenous levels of ACE1 protein.
Formulation	Liquid in PBS containing 50% glycerol, 0.5% BSA and 0.02% sodium azide..
Storage	Store at -20°C. Avoid repeated freeze-thaw cycles.
Protein Name	Angiotensin-converting enzyme
Gene Name	ACE
Cellular localization	[Angiotensin-converting enzyme, soluble form]: Secreted.; Cell membrane; Single-pass type I membrane protein. Cytoplasm . Detected in both cell membrane and cytoplasm in neurons. .
Purification	The antibody was affinity-purified from rabbit antiserum by affinity-chromatography using epitope-specific immunogen.

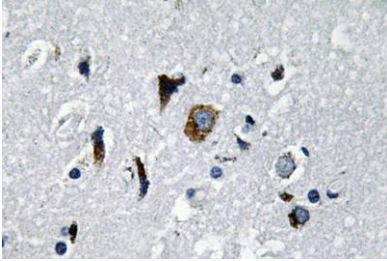
Clonality	Polyclonal
Concentration	1 mg/ml
Observed band	165kD
Human Gene ID	1636
Human Swiss-Prot Number	P12821
Alternative Names	ACE; DCP; DCP1; Angiotensin-converting enzyme; ACE; Dipeptidyl carboxypeptidase I; Kininase II; CD antigen CD143

Background

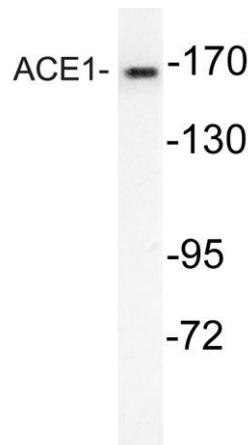
This gene encodes an enzyme involved in catalyzing the conversion of angiotensin I into a physiologically active peptide angiotensin II. Angiotensin II is a potent vasopressor and aldosterone-stimulating peptide that controls blood pressure and fluid-electrolyte balance. This enzyme plays a key role in the renin-angiotensin system. Many studies have associated the presence or absence of a 287 bp Alu repeat element in this gene with the levels of circulating enzyme or cardiovascular pathophysiologies. Multiple alternatively spliced transcript variants encoding different isoforms have been identified, and two most abundant spliced variants encode the somatic form and the testicular form, respectively, that are equally active. [provided by RefSeq, May 2010],



Western Blot analysis of HuvEc cells using ACE1 Polyclonal Antibody diluted at 1:1000



Immunohistochemistry analysis of ACE1 antibody in paraffin-embedded human brain tissue.



Western blot analysis of lysates from mouse kidney, using ACE1 antibody.