

**DAPK3 (phospho Thr265) rabbit pAb****Cat#: orb767842 (Manual)**

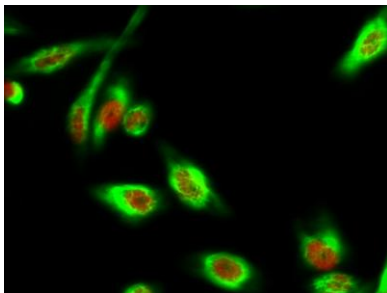
For research use only. Not intended for diagnostic use.

<b>Product Name</b>	DAPK3 (phospho Thr265) rabbit pAb
<b>Host species</b>	Rabbit
<b>Applications</b>	WB;IHC;IF;ELISA
<b>Species Cross-Reactivity</b>	Human;Mouse;Rat
<b>Recommended dilutions</b>	Western Blot: 1/500 - 1/2000. Immunohistochemistry: 1/100 - 1/300. Immunofluorescence: 1/200 - 1/1000. ELISA: 1/10000. Not yet tested in other applications.
<b>Immunogen</b>	The antiserum was produced against synthesized peptide derived from human DAPK3 around the phosphorylation site of Thr265. AA range:241-290
<b>Specificity</b>	Phospho-DAPK3 (T265) Polyclonal Antibody detects endogenous levels of DAPK3 protein only when phosphorylated at T265.
<b>Formulation</b>	Liquid in PBS containing 50% glycerol, 0.5% BSA and 0.02% sodium azide..
<b>Storage</b>	Store at -20°C. Avoid repeated freeze-thaw cycles.
<b>Protein Name</b>	Death-associated protein kinase 3
<b>Gene Name</b>	DAPK3
<b>Cellular localization</b>	Nucleus . Cytoplasm . Predominantly localizes to the cytoplasm but can shuttle between the nucleus and cytoplasm; cytoplasmic localization is promoted by phosphorylation at Thr-299 and involves Rho/Rock signaling. .; [Isoform 1]: Nucleus . Cytoplasm .; [Isoform 2]: Nucleus . Cytoplasm .
<b>Purification</b>	The antibody was affinity-purified from rabbit antiserum by affinity-chromatography using epitope-specific immunogen.

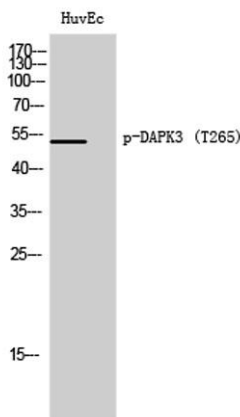
<b>Clonality</b>	Polyclonal
<b>Concentration</b>	1 mg/ml
<b>Observed band</b>	52kD
<b>Human Gene ID</b>	1613
<b>Human Swiss-Prot Number</b>	O43293
<b>Alternative Names</b>	DAPK3; ZIPK; Death-associated protein kinase 3; DAP kinase 3; DAP-like kinase; Dlk; MYPT1 kinase; Zipper-interacting protein kinase; ZIP-kinase

## Background

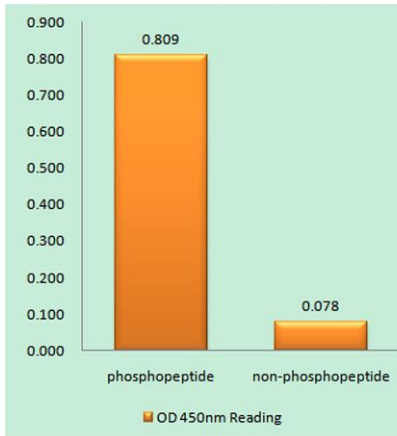
Death-associated protein kinase 3 (DAPK3) induces morphological changes in apoptosis when overexpressed in mammalian cells. These results suggest that DAPK3 may play a role in the induction of apoptosis. [provided by RefSeq, Jul 2008],



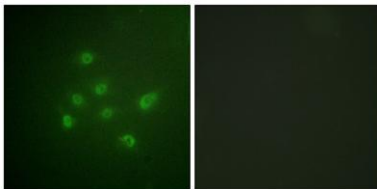
**Immunofluorescence analysis of HeLa cell. 1, DAPK3 (phospho Thr265) Polyclonal Antibody (red) was diluted at 1:200 (4° overnight).  $\alpha$ -tubulin Monoclonal Antibody (8F11) (green) was diluted at 1:200 (4° overnight). 2, Goat Anti Rabbit Alexa Fluor 594 Catalog: RS3611 was diluted at 1:1000 (room temperature, 50 min). Goat Anti Mouse Alexa Fluor 488 Catalog: RS3208 was diluted at 1:1000 (room temperature, 50 min).**



**Western Blot analysis of HuvEc cells using Phospho-DAPK3 (T265) Polyclonal Antibody**



**Enzyme-Linked Immunosorbent Assay (Phospho-ELISA) for Immunogen Phosphopeptide (Phospho-left) and Non-Phosphopeptide (Phospho-right), using DAPK3 (Phospho-Thr265) Antibody**



**Immunofluorescence analysis of A549 cells, using DAPK3 (Phospho-Thr265) Antibody. The picture on the right is blocked with the phospho peptide.**