

**DAPK1 rabbit pAb****Cat#: orb767840 (Manual)**

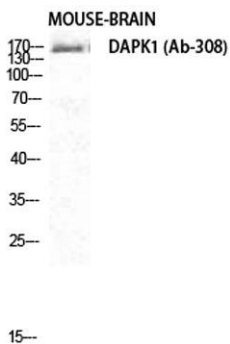
For research use only. Not intended for diagnostic use.

<b>Product Name</b>	DAPK1 rabbit pAb
<b>Host species</b>	Rabbit
<b>Applications</b>	WB;IHC;IF;ELISA
<b>Species Cross-Reactivity</b>	Human;Mouse
<b>Recommended dilutions</b>	Immunohistochemistry: 1/100 - 1/300. Immunofluorescence: 1/200 - 1/1000. ELISA: 1/5000. Not yet tested in other applications.
<b>Immunogen</b>	The antiserum was produced against synthesized peptide derived from human DAPK1. AA range:274-323
<b>Specificity</b>	DAPK1 Polyclonal Antibody detects endogenous levels of DAPK1 protein.
<b>Formulation</b>	Liquid in PBS containing 50% glycerol, 0.5% BSA and 0.02% sodium azide..
<b>Storage</b>	Store at -20°C. Avoid repeated freeze-thaw cycles.
<b>Protein Name</b>	Death-associated protein kinase 1
<b>Gene Name</b>	DAPK1
<b>Cellular localization</b>	[Isoform 1]: Cytoplasm. Cytoplasm, cytoskeleton. Colocalizes with MAP1B in the microtubules and cortical actin fibers.; [Isoform 2]: Cytoplasm. Cytoplasm, cytoskeleton.
<b>Purification</b>	The antibody was affinity-purified from rabbit antiserum by affinity-chromatography using epitope-specific immunogen.

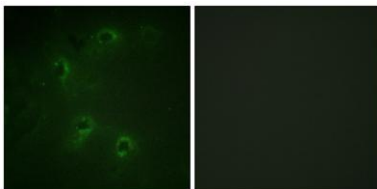
<b>Clonality</b>	Polyclonal
<b>Concentration</b>	1 mg/ml
<b>Observed band</b>	160kD
<b>Human Gene ID</b>	1612
<b>Human Swiss-Prot Number</b>	P53355
<b>Alternative Names</b>	DAPK1; DAPK; Death-associated protein kinase 1; DAP kinase 1

## Background

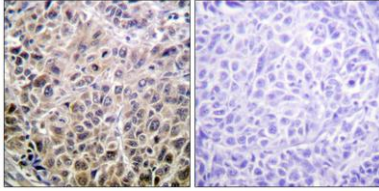
Death-associated protein kinase 1 is a positive mediator of gamma-interferon induced programmed cell death. DAPK1 encodes a structurally unique 160-kD calmodulin dependent serine-threonine kinase that carries 8 ankyrin repeats and 2 putative P-loop consensus sites. It is a tumor suppressor candidate. Alternative splicing results in multiple transcript variants. [provided by RefSeq, Dec 2013],



**Western Blot analysis of MOUSE-BRAIN cells using DAPK1 Polyclonal Antibody diluted at 1:1000**



**Immunofluorescence analysis of COS7 cells, using DAPK1 Antibody. The picture on the right is blocked with the synthesized peptide.**



**Immunohistochemistry analysis of paraffin-embedded human liver carcinoma tissue, using DAPK1 Antibody. The picture on the right is blocked with the synthesized peptide.**