

CYP17A1 rabbit pAb**Cat#: orb767823 (Manual)**

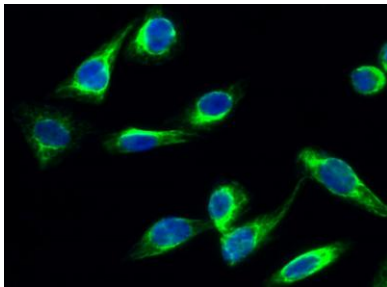
For research use only. Not intended for diagnostic use.

Product Name	CYP17A1 rabbit pAb
Host species	Rabbit
Applications	WB;IHC;IF;ELISA
Species Cross-Reactivity	Human
Recommended dilutions	Western Blot: 1/500 - 1/2000. Immunohistochemistry: 1/100 - 1/300. Immunofluorescence: 1/200 - 1/1000. ELISA: 1/10000. Not yet tested in other applications.
Immunogen	The antiserum was produced against synthesized peptide derived from human Cytochrome P450 17A1. AA range:221-270
Specificity	CYP17A1 Polyclonal Antibody detects endogenous levels of CYP17A1 protein.
Formulation	Liquid in PBS containing 50% glycerol, 0.5% BSA and 0.02% sodium azide..
Storage	Store at -20°C. Avoid repeated freeze-thaw cycles.
Protein Name	Steroid 17-alpha-hydroxylase/17,20 lyase
Gene Name	CYP17A1
Cellular localization	Endoplasmic reticulum membrane . Microsome membrane .
Purification	The antibody was affinity-purified from rabbit antiserum by affinity-chromatography using epitope-specific immunogen.
Clonality	Polyclonal

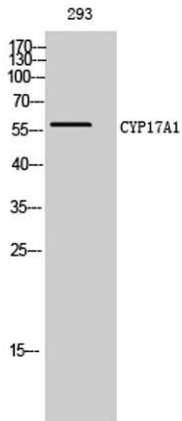
Concentration	1 mg/ml
Observed band	50kD
Human Gene ID	1586
Human Swiss-Prot Number	P05093
Alternative Names	CYP17A1; CYP17; S17AH; Steroid 17-alpha-hydroxylase/17; 20 lyase; CYPXVII; Cytochrome P450 17A1; Cytochrome P450-C17; Cytochrome P450c17; Steroid 17-alpha-monooxygenase

Background

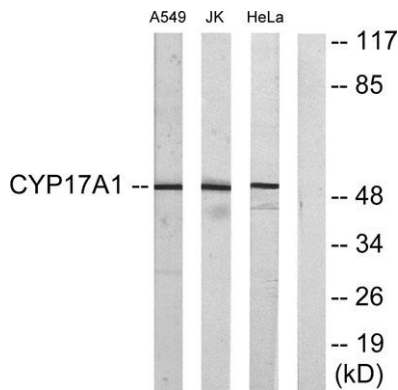
cytochrome P450 family 17 subfamily A member 1(CYP17A1) Homo sapiens This gene encodes a member of the cytochrome P450 superfamily of enzymes. The cytochrome P450 proteins are monooxygenases which catalyze many reactions involved in drug metabolism and synthesis of cholesterol, steroids and other lipids. This protein localizes to the endoplasmic reticulum. It has both 17alpha-hydroxylase and 17,20-lyase activities and is a key enzyme in the steroidogenic pathway that produces progestins, mineralocorticoids, glucocorticoids, androgens, and estrogens. Mutations in this gene are associated with isolated steroid-17 alpha-hydroxylase deficiency, 17-alpha-hydroxylase/17,20-lyase deficiency, pseudohermaphroditism, and adrenal hyperplasia. [provided by RefSeq, Jul 2008],



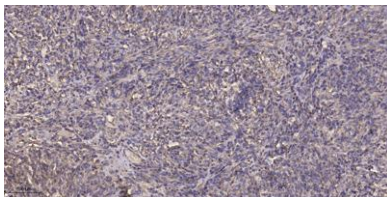
Immunofluorescence analysis of HeLa cell. 1,CYP17A1 Polyclonal Antibody(green) was diluted at 1:200(4° overnight). 2, Goat Anti Rabbit Alexa Fluor 488 Catalog:RS3211 was diluted at 1:1000(room temperature, 50min). 3 DAPI(blue) 10min.



Western Blot analysis of 293 cells using CYP17A1 Polyclonal Antibody diluted at 1:2000



Western blot analysis of lysates from Jurkat, A549, and HeLa cells, using Cytochrome P450 17A1 Antibody. The lane on the right is blocked with the synthesized peptide.



Immunohistochemical analysis of paraffin-embedded human Colon cancer. 1, Antibody was diluted at 1:200(4° overnight). 2, Tris-EDTA,pH9.0 was used for antigen retrieval. 3,Secondary antibody was diluted at 1:200(room temperature, 45min).