

Pragmin (phospho Tyr413) rabbit pAb**Cat#: orb767817 (Manual)**

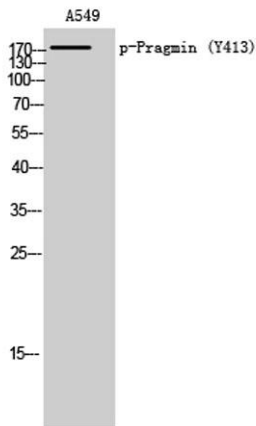
For research use only. Not intended for diagnostic use.

Product Name	Pragmin (phospho Tyr413) rabbit pAb
Host species	Rabbit
Applications	WB;IHC;IF;ELISA
Species Cross-Reactivity	Human;Mouse;Rat
Recommended dilutions	Western Blot: 1/500 - 1/2000. Immunohistochemistry: 1/100 - 1/300. ELISA: 1/10000. Not yet tested in other applications.
Immunogen	Synthesized phospho-peptide around the phosphorylation site of human Pragmin (phospho Tyr413)
Specificity	Phospho-Pragmin (Y413) Polyclonal Antibody detects endogenous levels of Pragmin protein only when phosphorylated at Y413.
Formulation	Liquid in PBS containing 50% glycerol, 0.5% BSA and 0.02% sodium azide..
Storage	Store at -20°C. Avoid repeated freeze-thaw cycles.
Protein Name	Tyrosine-protein kinase SgK223
Gene Name	SGK223
Cellular localization	Cytoplasm . Cell junction, focal adhesion . Nucleus . Colocalized with NOTCH1 in the nucleus. .
Purification	The antibody was affinity-purified from rabbit antiserum by affinity-chromatography using epitope-specific immunogen.
Clonality	Polyclonal

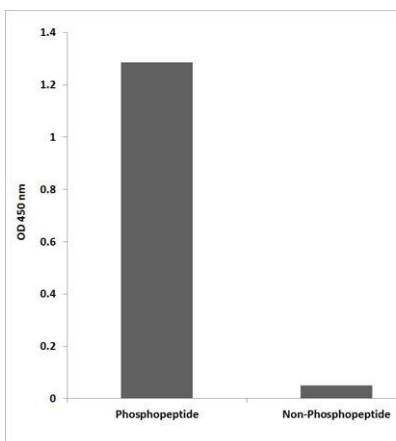
Concentration	1 mg/ml
Observed band	175kD
Human Gene ID	157285
Human Swiss-Prot Number	Q86YV5
Alternative Names	SGK223; Tyrosine-protein kinase SgK223; Sugen kinase 223

Background

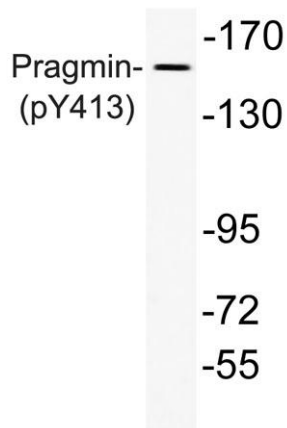
This gene encodes an enzyme that belongs to the tyrosine protein kinase family. A similar protein in rat binds to Rho family GTPase 2 (Rnd2) and regulates neurite outgrowth via activation of Ras homolog gene family, member A (RhoA). [provided by RefSeq, Mar 2014],



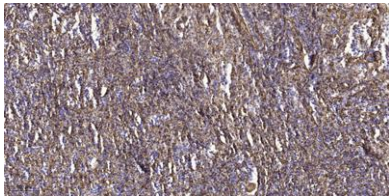
Western Blot analysis of A549 cells using Phospho-Pragmin (Y413) Polyclonal Antibody



Enzyme-Linked Immunosorbent Assay (Phospho-ELISA) for Immunogen Phosphopeptide (Phospho-left) and Non-Phosphopeptide (Phospho-right), using Pragmin (Phospho-Tyr413) Antibody



Western blot analysis of lysate from A549 cells, using phospho-Pragmin (Phospho-Tyr413) antibody.



Immunohistochemical analysis of paraffin-embedded human spleen tissue. 1,primary Antibody was diluted at 1:200(4° overnight). 2, Sodium citrate pH 6.0 was used for antigen retrieval(>98°C,20min). 3,Secondary antibody was diluted at 1:200