

CYP2E1 rabbit pAb**Cat#: orb767816 (Manual)**

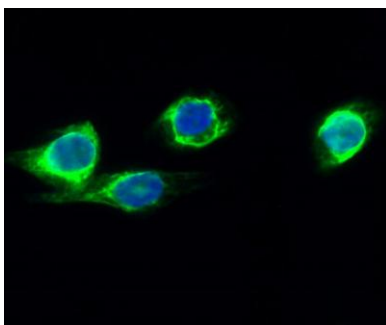
For research use only. Not intended for diagnostic use.

| | |
|---------------------------------|----------------------------------------------------------------------------------------------------------------------------------------------------------------------------------------------------------------------------------------------------------------------------------------------------------------------------------------------------------------------------------------------------------------------------|
| Product Name | CYP2E1 rabbit pAb |
| Host species | Rabbit |
| Applications | WB;IHC;IF;ELISA |
| Species Cross-Reactivity | Human;Mouse;Rat |
| Recommended dilutions | Western Blot: 1/500 - 1/2000. Immunohistochemistry: 1/100 - 1/300. Immunofluorescence: 1/200 - 1/1000. ELISA: 1/5000. Not yet tested in other applications. |
| Immunogen | The antiserum was produced against synthesized peptide derived from human Cytochrome P450 2E1. AA range:371-420 |
| Specificity | CYP2E1 Polyclonal Antibody detects endogenous levels of CYP2E1 protein. |
| Formulation | Liquid in PBS containing 50% glycerol, 0.5% BSA and 0.02% sodium azide.. |
| Storage | Store at -20°C. Avoid repeated freeze-thaw cycles. |
| Protein Name | Cytochrome P450 2E1 |
| Gene Name | CYP2E1 |
| Cellular localization | Endoplasmic reticulum membrane ; Peripheral membrane protein . Microsome membrane ; Peripheral membrane protein . Mitochondrion inner membrane ; Peripheral membrane protein . Post-translationally targeted to mitochondria. TOMM70 is required for the translocation across the mitochondrial outer membrane. After translocation into the matrix, associates with the inner membrane as a membrane extrinsic protein. . |

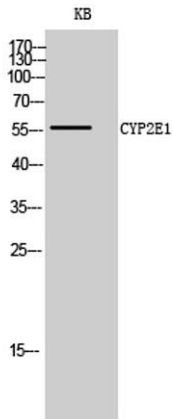
| | |
|--------------------------------|-----------------------------------------------------------------------------------------------------------------------|
| Purification | The antibody was affinity-purified from rabbit antiserum by affinity-chromatography using epitope-specific immunogen. |
| Clonality | Polyclonal |
| Concentration | 1 mg/ml |
| Observed band | 56kD |
| Human Gene ID | 1571 |
| Human Swiss-Prot Number | P05181 |
| Alternative Names | CYP2E1; CYP2E; Cytochrome P450 2E1; 4-nitrophenol 2-hydroxylase; CYP11E1; Cytochrome P450-J |

Background

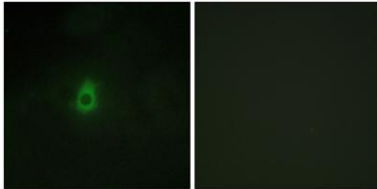
This gene encodes a member of the cytochrome P450 superfamily of enzymes. The cytochrome P450 proteins are monooxygenases which catalyze many reactions involved in drug metabolism and synthesis of cholesterol, steroids and other lipids. This protein localizes to the endoplasmic reticulum and is induced by ethanol, the diabetic state, and starvation. The enzyme metabolizes both endogenous substrates, such as ethanol, acetone, and acetal, as well as exogenous substrates including benzene, carbon tetrachloride, ethylene glycol, and nitrosamines which are premutagens found in cigarette smoke. Due to its many substrates, this enzyme may be involved in such varied processes as gluconeogenesis, hepatic cirrhosis, diabetes, and cancer. [provided by RefSeq, Jul 2008],



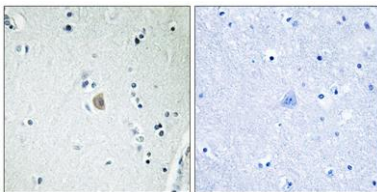
Immunofluorescence analysis of HeLa cell. 1, CYP2E1 Polyclonal Antibody (green) was diluted at 1:200 (4° overnight). 2, Goat Anti Rabbit Alexa Fluor 488 Catalog:RS3211 was diluted at 1:1000 (room temperature, 50min). 3 DAPI (blue) 10min.



Western Blot analysis of KB cells using CYP2E1 Polyclonal Antibody diluted at 1:500



Immunofluorescence analysis of HepG2 cells, using Cytochrome P450 2E1 Antibody. The picture on the right is blocked with the synthesized peptide.



Immunohistochemistry analysis of paraffin-embedded human brain tissue, using Cytochrome P450 2E1 Antibody. The picture on the right is blocked with the synthesized peptide.