

**SIK1 rabbit pAb****Cat#: orb767770 (Manual)**

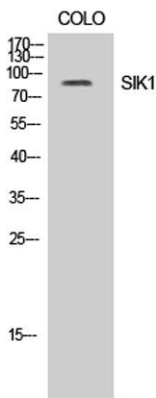
For research use only. Not intended for diagnostic use.

<b>Product Name</b>	SIK1 rabbit pAb
<b>Host species</b>	Rabbit
<b>Applications</b>	WB;IHC
<b>Species Cross-Reactivity</b>	Human;Rat
<b>Recommended dilutions</b>	WB 1:500-2000;IHC-p 1:50-300
<b>Immunogen</b>	The antiserum was produced against synthesized peptide derived from human SIK. AA range:148-197
<b>Specificity</b>	SIK1 Polyclonal Antibody detects endogenous levels of SIK1 protein.
<b>Formulation</b>	Liquid in PBS containing 50% glycerol, 0.5% BSA and 0.02% sodium azide..
<b>Storage</b>	Store at -20°C. Avoid repeated freeze-thaw cycles.
<b>Protein Name</b>	Serine/threonine-protein kinase SIK1
<b>Gene Name</b>	SIK1
<b>Cellular localization</b>	Cytoplasm . Nucleus . Locates to cytoplasm when inactive following cAMP-induced phosphorylation, probably by PKA (PubMed:29211348).
<b>Purification</b>	The antibody was affinity-purified from rabbit antiserum by affinity-chromatography using epitope-specific immunogen.
<b>Clonality</b>	Polyclonal

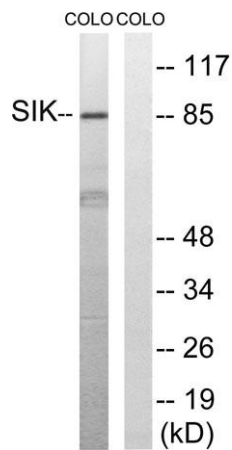
<b>Concentration</b>	1 mg/ml
<b>Observed band</b>	85kD
<b>Human Gene ID</b>	150094
<b>Human Swiss-Prot Number</b>	P57059
<b>Alternative Names</b>	SIK1; SIK; SNF1LK; Serine/threonine-protein kinase SIK1; Salt-inducible kinase 1; SIK-1; Serine/threonine-protein kinase SNF1-like kinase 1; Serine/threonine-protein kinase SNF1LK

## Background

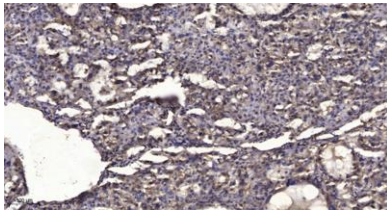
catalytic activity:ATP + a protein = ADP + a phosphoprotein.,cofactor:Magnesium.,enzyme regulation:Activated by phosphorylation on Thr-182 by STK11 in complex with STE20-related adapter-alpha (STRAD alpha) pseudo kinase and CAB39.,function:Transient role during the earliest stages of myocardial cell differentiation and/or primitive chamber formation and may also be important for the earliest stages of skeletal muscle growth and/or differentiation. Potential role in G2/M cell cycle regulation. Inhibits CREB activity by phosphorylating and repressing the CREB-specific coactivators, CRTC1-3.,PTM:Phosphorylated upon DNA damage, probably by ATM or ATR.,similarity:Belongs to the protein kinase superfamily. CAMK Ser/Thr protein kinase family. AMPK subfamily.,similarity:Contains 1 protein kinase domain.,similarity:Contains 1 UBA domain.,subcellular location:Translocates to the cytoplasm on phosphorylation where it binds binding to YWHAZ.,subunit:Binds to and is activated by YWHAZ when phosphorylated on Thr-182.,



Western Blot analysis of COLO cells using SIK1 Polyclonal Antibody



Western blot analysis of lysates from COLO205 cells, treated with PMA 125ng/ml 30', using SIK Antibody. The lane on the right is blocked with the synthesized peptide.



Immunohistochemical analysis of paraffin-embedded human liver cancer. 1, Antibody was diluted at 1:200(4° overnight). 2, Tris-EDTA,pH9.0 was used for antigen retrieval. 3,Secondary antibody was diluted at 1:200(room temperature, 45min).