

Eme1 rabbit pAb**Cat#: orb767747 (Manual)**

For research use only. Not intended for diagnostic use.

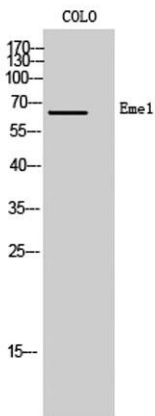
Product Name	Eme1 rabbit pAb
Host species	Rabbit
Applications	WB;ELISA
Species Cross-Reactivity	Human;Rat;Mouse;
Recommended dilutions	Western Blot: 1/500 - 1/2000. ELISA: 1/5000. Not yet tested in other applications.
Immunogen	Synthesized peptide derived from Eme1 . at AA range: 250-330
Specificity	Eme1 Polyclonal Antibody detects endogenous levels of Eme1 protein.
Formulation	Liquid in PBS containing 50% glycerol, 0.5% BSA and 0.02% sodium azide..
Storage	Store at -20°C. Avoid repeated freeze-thaw cycles.
Protein Name	Crossover junction endonuclease EME1
Gene Name	EME1
Cellular localization	Nucleus, nucleolus . Recruited to regions of DNA damage in S-phase cells.
Purification	The antibody was affinity-purified from rabbit antiserum by affinity-chromatography using epitope-specific immunogen.
Clonality	Polyclonal

Explore. Bioreagents.

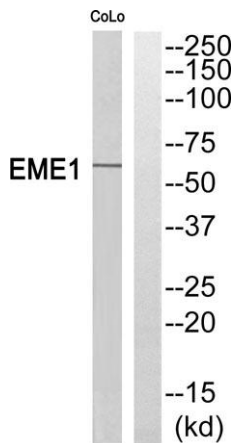
Concentration	1 mg/ml
Observed band	65kD
Human Gene ID	146956
Human Swiss-Prot Number	Q96AY2
Alternative Names	EME1; MMS4; Crossover junction endonuclease EME1; MMS4 homolog; hMMS4

Background

This gene encodes a protein that complexes with methyl methanesulfonate-sensitive UV-sensitive 81 protein to form an endonuclease complex. The encoded protein interacts with specific DNA structures including nicked Holliday junctions, 3'-flap structures and aberrant replication fork structures. This protein may be involved in repairing DNA damage and in maintaining genomic stability. Alternative splicing results in multiple transcript variants.[provided by RefSeq, Oct 2009],



Western Blot analysis of COLO cells using Eme1 Polyclonal Antibody cells nucleus extracted by Minute TM Cytoplasmic and Nuclear Fractionation kit (SC-003, Invent biotech, MN, USA).



Western blot analysis of EME1 Antibody. The lane on the right is blocked with the EME1 peptide.



Explore. Bioreagents.

www.biorbyt.com