

Casein Kinase II β (phospho Ser209) rabbit pAb**Cat#: orb767740 (Manual)**

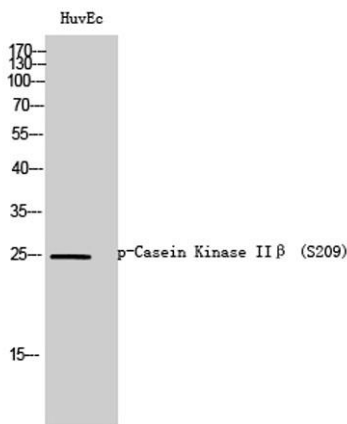
For research use only. Not intended for diagnostic use.

Product Name	Casein Kinase II β (phospho Ser209) rabbit pAb
Host species	Rabbit
Applications	WB;IHC;IF;ELISA
Species Cross-Reactivity	Human;Mouse;Rat
Recommended dilutions	Western Blot: 1/500 - 1/2000. Immunohistochemistry: 1/100 - 1/300. ELISA: 1/40000. Not yet tested in other applications.
Immunogen	The antiserum was produced against synthesized peptide derived from human CKII-beta around the phosphorylation site of Ser209. AA range: 166-215
Specificity	Phospho-Casein Kinase II β (S209) Polyclonal Antibody detects endogenous levels of Casein Kinase II β protein only when phosphorylated at S209.
Formulation	Liquid in PBS containing 50% glycerol, 0.5% BSA and 0.02% sodium azide..
Storage	Store at -20°C. Avoid repeated freeze-thaw cycles.
Protein Name	Casein kinase II subunit beta
Gene Name	CSNK2B
Cellular localization	nucleus,nucleoplasm,cytoplasm,cytosol,plasma membrane,protein kinase CK2 complex,PcG protein complex,extracellular exosome,
Purification	The antibody was affinity-purified from rabbit antiserum by affinity-chromatography using epitope-specific immunogen.
Clonality	Polyclonal

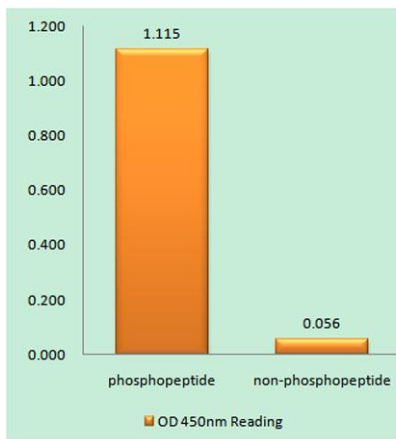
Concentration	1 mg/ml
Observed band	25kD
Human Gene ID	1460
Human Swiss-Prot Number	P67870
Alternative Names	CSNK2B; CK2N; G5A; Casein kinase II subunit beta; CK II beta; Phosvitin; Protein G5a

Background

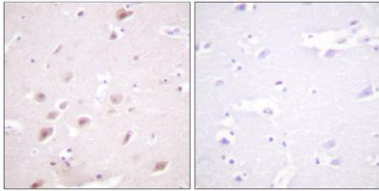
This gene encodes the beta subunit of casein kinase II, a ubiquitous protein kinase which regulates metabolic pathways, signal transduction, transcription, translation, and replication. The enzyme is composed of three subunits, alpha, alpha prime and beta, which form a tetrameric holoenzyme. The alpha and alpha prime subunits are catalytic, while the beta subunit serves regulatory functions. The enzyme localizes to the endoplasmic reticulum and the Golgi apparatus. Two transcript variants encoding different isoforms have been found for this gene. [provided by RefSeq, Sep 2013],



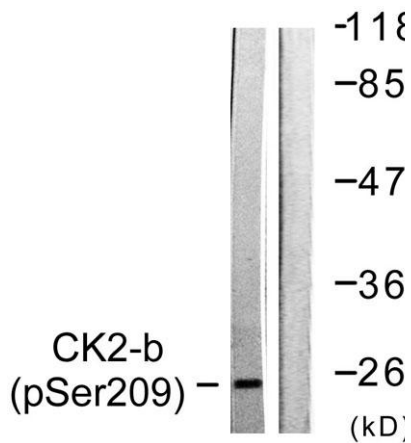
Western Blot analysis of HuvEc cells using Phospho-Casein Kinase II β (S209) Polyclonal Antibody



Enzyme-Linked Immunosorbent Assay (Phospho-ELISA) for Immunogen Phosphopeptide (Phospho-left) and Non-Phosphopeptide (Phospho-right), using CKII-beta (Phospho-Ser209) Antibody



Immunohistochemistry analysis of paraffin-embedded human brain, using CKII-beta (Phospho-Ser209) Antibody. The picture on the right is blocked with the phospho peptide.



Western blot analysis of lysates from HUVEC cells, using CKII-beta (Phospho-Ser209) Antibody. The lane on the right is blocked with the phospho peptide.