

Casein Kinase II α (phospho Tyr255) rabbit pAb**Cat#: orb767738 (Manual)**

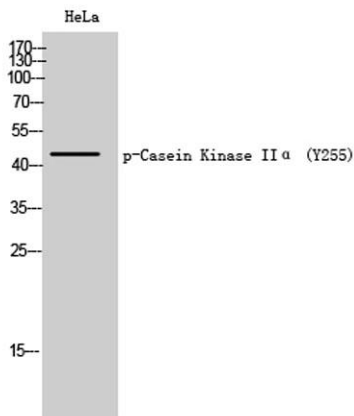
For research use only. Not intended for diagnostic use.

Product Name	Casein Kinase II α (phospho Tyr255) rabbit pAb
Host species	Rabbit
Applications	WB;IHC;IF;ELISA
Species Cross-Reactivity	Human;Mouse;Rat
Recommended dilutions	Western Blot: 1/500 - 1/2000. Immunohistochemistry: 1/100 - 1/300. ELISA: 1/10000. Not yet tested in other applications.
Immunogen	The antiserum was produced against synthesized peptide derived from human Casein Kinase II alpha around the phosphorylation site of Tyr255. AA range:221-270
Specificity	Phospho-Casein Kinase II α (Y255) Polyclonal Antibody detects endogenous levels of Casein Kinase II α protein only when phosphorylated at Y255.
Formulation	Liquid in PBS containing 50% glycerol, 0.5% BSA and 0.02% sodium azide..
Storage	Store at -20°C. Avoid repeated freeze-thaw cycles.
Protein Name	Casein kinase II subunit alpha
Gene Name	CSNK2A1
Cellular localization	Nucleus .
Purification	The antibody was affinity-purified from rabbit antiserum by affinity-chromatography using epitope-specific immunogen.
Clonality	Polyclonal

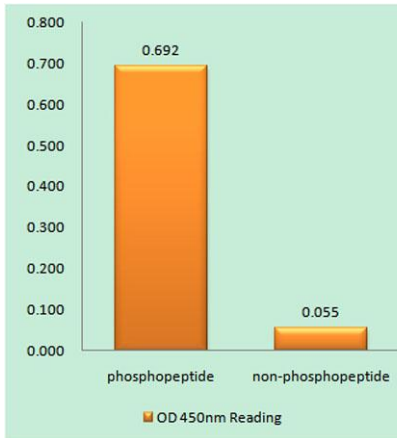
Concentration	1 mg/ml
Observed band	45kD
Human Gene ID	1457
Human Swiss-Prot Number	P68400
Alternative Names	CSNK2A1; CK2A1; Casein kinase II subunit alpha; CK II alpha

Background

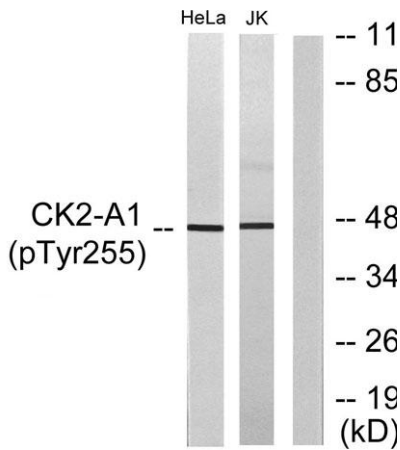
Casein kinase II is a serine/threonine protein kinase that phosphorylates acidic proteins such as casein. It is involved in various cellular processes, including cell cycle control, apoptosis, and circadian rhythm. The kinase exists as a tetramer and is composed of an alpha, an alpha-prime, and two beta subunits. The alpha subunits contain the catalytic activity while the beta subunits undergo autophosphorylation. The protein encoded by this gene represents the alpha subunit. While this gene is found on chromosome 20, a related transcribed pseudogene is found on chromosome 11. Three transcript variants encoding two different proteins have been found for this gene. [provided by RefSeq, Jul 2014],



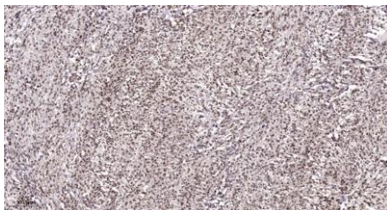
Western Blot analysis of HeLa cells using Phospho-Casein Kinase II α (Y255) Polyclonal Antibody cells nucleus extracted by Minute TM Cytoplasmic and Nuclear Fractionation kit (SC-003, Inventbiotech, MN, USA).



Enzyme-Linked Immunosorbent Assay (Phospho-ELISA) for Immunogen Phosphopeptide (Phospho-left) and Non-Phosphopeptide (Phospho-right), using Casein Kinase II alpha (Phospho-Tyr255) Antibody



Western blot analysis of lysates from HeLa cells and Jurkat cells, using Casein Kinase II alpha (Phospho-Tyr255) Antibody. The lane on the right is blocked with the phospho peptide.



Immunohistochemical analysis of paraffin-embedded human Colon cancer. 1, Antibody was diluted at 1:200(4° overnight). 2, Tris-EDTA,pH9.0 was used for antigen retrieval. 3,Secondary antibody was diluted at 1:200(room temperature, 45min).