

PTGR2 rabbit pAb**Cat#: orb767736 (Manual)**

For research use only. Not intended for diagnostic use.

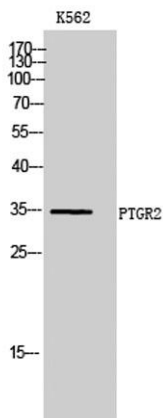
Product Name	PTGR2 rabbit pAb
Host species	Rabbit
Applications	WB;IHC;IF;ELISA
Species Cross-Reactivity	Human;Rat;Mouse;
Recommended dilutions	Western Blot: 1/500 - 1/2000. Immunohistochemistry: 1/100 - 1/300. ELISA: 1/10000. Not yet tested in other applications.
Immunogen	The antiserum was produced against synthesized peptide derived from human ZADH1. AA range:181-230
Specificity	PTGR2 Polyclonal Antibody detects endogenous levels of PTGR2 protein.
Formulation	Liquid in PBS containing 50% glycerol, 0.5% BSA and 0.02% sodium azide..
Storage	Store at -20°C. Avoid repeated freeze-thaw cycles.
Protein Name	Prostaglandin reductase 2
Gene Name	PTGR2
Cellular localization	Cytoplasm .
Purification	The antibody was affinity-purified from rabbit antiserum by affinity-chromatography using epitope-specific immunogen.
Clonality	Polyclonal

Explore. Bioreagents.

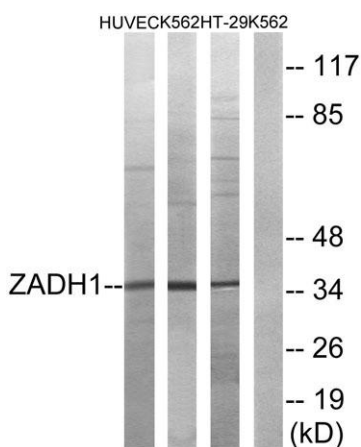
Concentration	1 mg/ml
Observed band	35kD
Human Gene ID	145482
Human Swiss-Prot Number	Q8N8N7
Alternative Names	PTGR2; ZADH1; Prostaglandin reductase 2; PRG-2; 15-oxoprostaglandin 13-reductase; Zinc-binding alcohol dehydrogenase domain-containing protein 1

Background

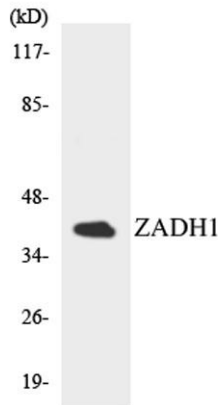
This gene encodes an enzyme involved in the metabolism of prostaglandins. The encoded protein catalyzes the NADPH-dependent conversion of 15-keto-prostaglandin E2 to 15-keto-13,14-dihydro-prostaglandin E2. This protein may also be involved in regulating activation of the peroxisome proliferator-activated receptor. Alternative splicing results in multiple transcript variants. [provided by RefSeq, Apr 2009],



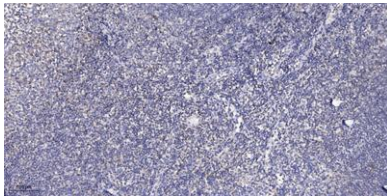
Western Blot analysis of K562 cells using PTGR2 Polyclonal Antibody



Western blot analysis of lysates from K562, HUVEC, and HT-29 cells, using ZADH1 Antibody. The lane on the right is blocked with the synthesized peptide.



Western blot analysis of the lysates from HepG2 cells using ZADH1 antibody.



Immunohistochemical analysis of paraffin-embedded human tonsil. 1, Antibody was diluted at 1:200(4° overnight). 2, Tris-EDTA,pH9.0 was used for antigen retrieval. 3,Secondary antibody was diluted at 1:200(room temperature, 30min).