

Casein Kinase Iε rabbit pAb**Cat#: orb767734 (Manual)**

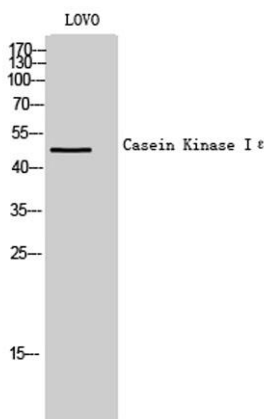
For research use only. Not intended for diagnostic use.

Product Name	Casein Kinase Iε rabbit pAb
Host species	Rabbit
Applications	WB;IHC;IF;ELISA
Species Cross-Reactivity	Human;Mouse
Recommended dilutions	Western Blot: 1/500 - 1/2000. Immunohistochemistry: 1/100 - 1/300. Immunofluorescence: 1/200 - 1/1000. ELISA: 1/20000. Not yet tested in other applications.
Immunogen	The antiserum was produced against synthesized peptide derived from human CKI-epsilon. AA range:276-325
Specificity	Casein Kinase Iε Polyclonal Antibody detects endogenous levels of Casein Kinase Iε protein.
Formulation	Liquid in PBS containing 50% glycerol, 0.5% BSA and 0.02% sodium azide..
Storage	Store at -20°C. Avoid repeated freeze-thaw cycles.
Protein Name	Casein kinase I isoform epsilon
Gene Name	CSNK1E
Cellular localization	Cytoplasm . Nucleus .
Purification	The antibody was affinity-purified from rabbit antiserum by affinity-chromatography using epitope-specific immunogen.
Clonality	Polyclonal

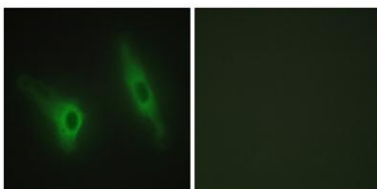
Concentration	1 mg/ml
Observed band	47kD
Human Gene ID	1454
Human Swiss-Prot Number	P49674
Alternative Names	CSNK1E; Casein kinase I isoform epsilon; CKI-epsilon; CKIε

Background

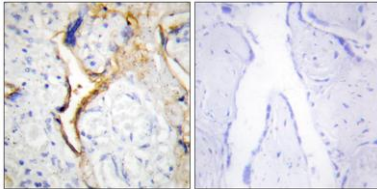
casein kinase 1 epsilon(CSNK1E) Homo sapiens The protein encoded by this gene is a serine/threonine protein kinase and a member of the casein kinase I protein family, whose members have been implicated in the control of cytoplasmic and nuclear processes, including DNA replication and repair. The encoded protein is found in the cytoplasm as a monomer and can phosphorylate a variety of proteins, including itself. This protein has been shown to phosphorylate period, a circadian rhythm protein. Two transcript variants encoding the same protein have been found for this gene. [provided by RefSeq, Feb 2014],



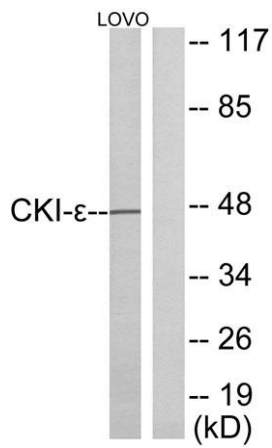
Western Blot analysis of LOVO cells using Casein Kinase Iε Polyclonal Antibody



Immunofluorescence analysis of HeLa cells, using CKI-epsilon Antibody. The picture on the right is blocked with the synthesized peptide.



Immunohistochemistry analysis of paraffin-embedded human placenta tissue, using CKI-epsilon Antibody. The picture on the right is blocked with the synthesized peptide.



Western blot analysis of lysates from LOVO cells, using CKI-epsilon Antibody. The lane on the right is blocked with the synthesized peptide.