

Csk (phospho Ser364) rabbit pAb**Cat#: orb767729 (Manual)**

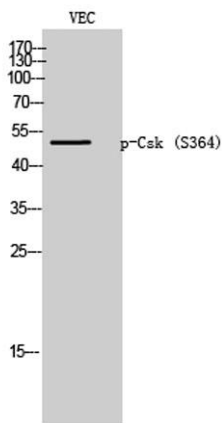
For research use only. Not intended for diagnostic use.

Product Name	Csk (phospho Ser364) rabbit pAb
Host species	Rabbit
Applications	WB;IHC;IF;ELISA
Species Cross-Reactivity	Human;Mouse;Rat
Recommended dilutions	Western Blot: 1/500 - 1/2000. Immunohistochemistry: 1/100 - 1/300. ELISA: 1/10000. Not yet tested in other applications.
Immunogen	The antiserum was produced against synthesized peptide derived from human Csk around the phosphorylation site of Ser364. AA range:330-379
Specificity	Phospho-Csk (S364) Polyclonal Antibody detects endogenous levels of Csk protein only when phosphorylated at S364.
Formulation	Liquid in PBS containing 50% glycerol, 0.5% BSA and 0.02% sodium azide..
Storage	Store at -20°C. Avoid repeated freeze-thaw cycles.
Protein Name	Tyrosine-protein kinase CSK
Gene Name	CSK
Cellular localization	Cytoplasm . Cell membrane . Mainly cytoplasmic, also present in lipid rafts. .
Purification	The antibody was affinity-purified from rabbit antiserum by affinity-chromatography using epitope-specific immunogen.
Clonality	Polyclonal

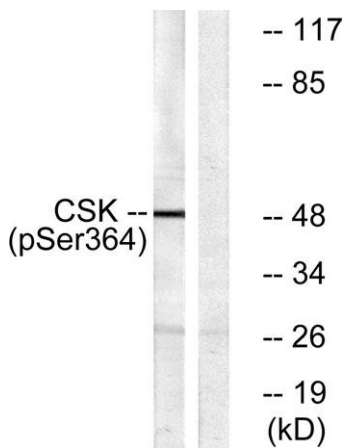
Concentration	1 mg/ml
Observed band	55kD
Human Gene ID	1445
Human Swiss-Prot Number	P41240
Alternative Names	CSK; Tyrosine-protein kinase CSK; C-Src kinase; Protein-tyrosine kinase CYL

Background

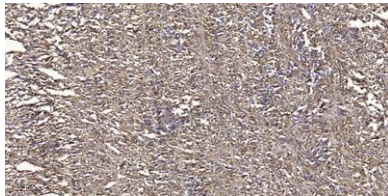
catalytic activity:ATP + a [protein]-L-tyrosine = ADP + a [protein]-L-tyrosine phosphate.,function:Specifically phosphorylates 'Tyr-504' on LCK, which acts as a negative regulatory site. Can also act on the LYN and FYN kinases.,PTM:Autophosphorylation of Tyr-304 occurs only at abnormally high CSK concentrations in vitro.,similarity:Belongs to the protein kinase superfamily. Tyr protein kinase family.,similarity:Belongs to the protein kinase superfamily. Tyr protein kinase family. CSK subfamily.,similarity:Contains 1 protein kinase domain.,similarity:Contains 1 SH2 domain.,similarity:Contains 1 SH3 domain.,subcellular location:Mainly cytoplasmic, also present in lipid rafts.,subunit:Interacts with PTPN8 (By similarity). Interacts with phosphorylated SIT1, PAG1, LIME1 and TGFB1I1.,tissue specificity:Expressed in lung and macrophages.,



Western Blot analysis of VEC cells using Phospho-Csk (S364) Polyclonal Antibody



Western blot analysis of lysates from HeLa cells treated with PMA 125ng/ml 30', using Csk (Phospho-Ser364) Antibody. The lane on the right is blocked with the phospho peptide.



Immunohistochemical analysis of paraffin-embedded human small intestinal carcinoma tissue. 1,primary Antibody was diluted at 1:200(4° overnight). 2, Sodium citrate pH 6.0 was used for antigen retrieval(>98°C,20min). 3,Secondary antibody was diluted at 1:2