

Dynein LC 2 rabbit pAb**Cat#: orb767702 (Manual)**

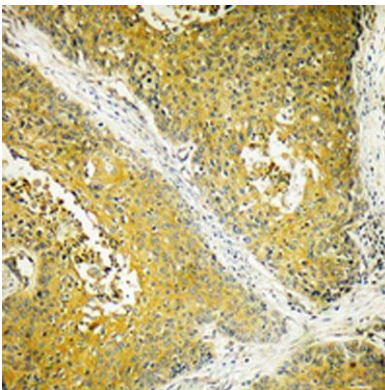
For research use only. Not intended for diagnostic use.

Product Name	Dynein LC 2 rabbit pAb
Host species	Rabbit
Applications	IHC;IF;ELISA
Species Cross-Reactivity	Human;Mouse;Rat
Recommended dilutions	Immunohistochemistry: 1/100 - 1/300. ELISA: 1/40000. Not yet tested in other applications.
Immunogen	The antiserum was produced against synthesized peptide derived from human DYNLL2. AA range:1-50
Specificity	Dynein LC 2 Polyclonal Antibody detects endogenous levels of Dynein LC 2 protein.
Formulation	Liquid in PBS containing 50% glycerol, 0.5% BSA and 0.02% sodium azide..
Storage	Store at -20°C. Avoid repeated freeze-thaw cycles.
Protein Name	Dynein light chain 2 cytoplasmic
Gene Name	DYNLL2
Cellular localization	Cytoplasm, cytoskeleton .
Purification	The antibody was affinity-purified from rabbit antiserum by affinity-chromatography using epitope-specific immunogen.
Clonality	Polyclonal

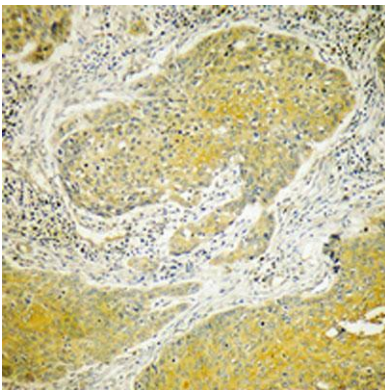
Concentration	1 mg/ml
Observed band	
Human Gene ID	140735
Human Swiss-Prot Number	Q96FJ2
Alternative Names	DYNLL2; DLC2; Dynein light chain 2; cytoplasmic; 8 kDa dynein light chain b; DLC8b; Dynein light chain LC8-type 2

Background

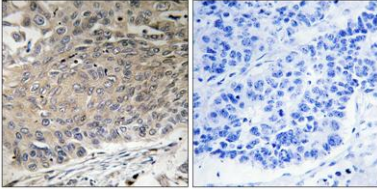
function: May be involved in some aspects of dynein-related intracellular transport and motility. May play a role in changing or maintaining the spatial distribution of cytoskeletal structures.,similarity: Belongs to the dynein light chain family.,subunit: Homodimer. Interacts with BMF. Component of the myosin V motor complex as well as the microtubular dynein motor complex. Interacts with rabies virus phosphoprotein.,



Immunohistochemical analysis of paraffin-embedded Human breast cancer. Antibody was diluted at 1:100(4° overnight). High-pressure and temperature Tris-EDTA,pH8.0 was used for antigen retrieval.



Immunohistochemical analysis of paraffin-embedded Human breast cancer. Antibody was diluted at 1:100(4° overnight). High-pressure and temperature Tris-EDTA,pH8.0 was used for antigen retrieval.



Immunohistochemistry analysis of paraffin-embedded human lung carcinoma tissue, using DYNLL2 Antibody. The picture on the right is blocked with the synthesized peptide.