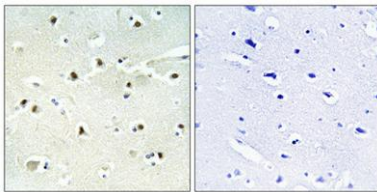


**S-100A16 rabbit pAb****Cat#: orb767697 (Manual)**

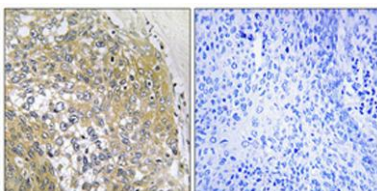
For research use only. Not intended for diagnostic use.

<b>Product Name</b>	S-100A16 rabbit pAb
<b>Host species</b>	Rabbit
<b>Applications</b>	WB;IHC;IF;ELISA
<b>Species Cross-Reactivity</b>	Human;Rat
<b>Recommended dilutions</b>	Western Blot: 1/500 - 1/2000. Immunohistochemistry: 1/100 - 1/300. ELISA: 1/40000. Not yet tested in other applications.
<b>Immunogen</b>	The antiserum was produced against synthesized peptide derived from human S100A16. AA range:19-68
<b>Specificity</b>	S-100A16 Polyclonal Antibody detects endogenous levels of S-100A16 protein.
<b>Formulation</b>	Liquid in PBS containing 50% glycerol, 0.5% BSA and 0.02% sodium azide..
<b>Storage</b>	Store at -20°C. Avoid repeated freeze-thaw cycles.
<b>Protein Name</b>	Protein S100-A16
<b>Gene Name</b>	S100A16
<b>Cellular localization</b>	Nucleus, nucleolus . Cytoplasm . Primarily nucleolar. A high intracellular calcium level induces nucleolar exit and nucleocytoplasmic transport, whereas a low intracellular calcium level leads to nuclear translocation and accumulation within specific region of nucleoli (PubMed:17030513).
<b>Purification</b>	The antibody was affinity-purified from rabbit antiserum by affinity-chromatography using epitope-specific immunogen.

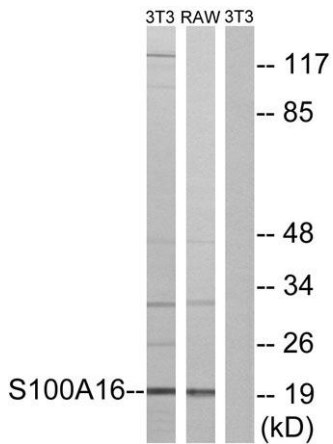
<b>Clonality</b>	Polyclonal
<b>Concentration</b>	1 mg/ml
<b>Observed band</b>	20kD
<b>Human Gene ID</b>	140576
<b>Human Swiss-Prot Number</b>	Q96FQ6
<b>Alternative Names</b>	S100A16; S100F; AAG13; Protein S100-A16; Aging-associated gene 13 protein; Protein S100-F; S100 calcium-binding protein A16
<b>Background</b>	similarity:Belongs to the S-100 family.,similarity:Contains 2 EF-hand domains.,



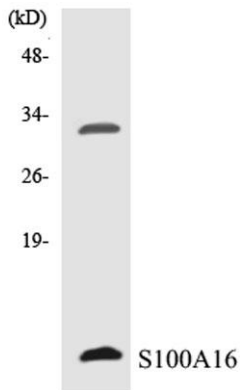
**Immunohistochemical analysis of paraffin-embedded Human brain. Antibody was diluted at 1:100(4° overnight). High-pressure and temperature Tris-EDTA,pH8.0 was used for antigen retrieval. Negative contrl (right) obtaned from antibody was pre-absorbed by immunogen peptide.**



**Immunohistochemical analysis of paraffin-embedded Human cervix cancer. Antibody was diluted at 1:100(4° overnight). High-pressure and temperature Tris-EDTA,pH8.0 was used for antigen retrieval. Negative contrl (right) obtaned from antibody was pre-absorbed by immunogen peptide.**



Western blot analysis of lysates from NIH/3T3 and RAW264.7 cells, using S100A16 Antibody. The lane on the right is blocked with the synthesized peptide.



Western blot analysis of the lysates from RAW264.7 cells using S100A16 antibody.