

**Adenosine A3-R rabbit pAb****Cat#: orb767696 (Manual)**

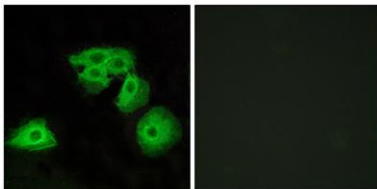
For research use only. Not intended for diagnostic use.

<b>Product Name</b>	Adenosine A3-R rabbit pAb
<b>Host species</b>	Rabbit
<b>Applications</b>	WB;IF;ELISA
<b>Species Cross-Reactivity</b>	Human;Mouse;Rat
<b>Recommended dilutions</b>	Western Blot: 1/500 - 1/2000. Immunofluorescence: 1/200 - 1/1000. ELISA: 1/10000. Not yet tested in other applications.
<b>Immunogen</b>	The antiserum was produced against synthesized peptide derived from human ADORA3. AA range:255-304
<b>Specificity</b>	Adenosine A3-R Polyclonal Antibody detects endogenous levels of Adenosine A3-R protein.
<b>Formulation</b>	Liquid in PBS containing 50% glycerol, 0.5% BSA and 0.02% sodium azide..
<b>Storage</b>	Store at -20°C. Avoid repeated freeze-thaw cycles.
<b>Protein Name</b>	Adenosine receptor A3
<b>Gene Name</b>	ADORA3
<b>Cellular localization</b>	plasma membrane,integral component of membrane,
<b>Purification</b>	The antibody was affinity-purified from rabbit antiserum by affinity-chromatography using epitope-specific immunogen.
<b>Clonality</b>	Polyclonal

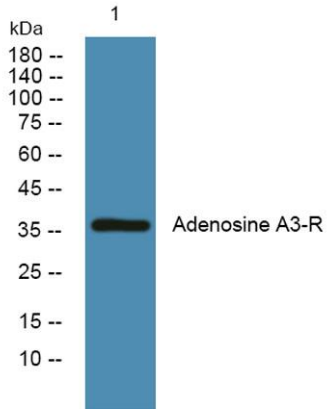
<b>Concentration</b>	1 mg/ml
<b>Observed band</b>	36kD
<b>Human Gene ID</b>	140
<b>Human Swiss-Prot Number</b>	P33765
<b>Alternative Names</b>	ADORA3; Adenosine receptor A3

**Background**

This gene encodes a protein that belongs to the family of adenosine receptors, which are G-protein-coupled receptors that are involved in a variety of intracellular signaling pathways and physiological functions. The receptor encoded by this gene mediates a sustained cardioprotective function during cardiac ischemia, it is involved in the inhibition of neutrophil degranulation in neutrophil-mediated tissue injury, it has been implicated in both neuroprotective and neurodegenerative effects, and it may also mediate both cell proliferation and cell death. Alternative splicing results in multiple transcript variants. This gene shares its 5' terminal exon with some transcripts from overlapping GeneID:57413, which encodes an immunoglobulin domain-containing protein. [provided by RefSeq, Nov 2014],



**Immunofluorescence analysis of HeLa cells, using ADORA3 Antibody. The picture on the right is blocked with the synthesized peptide.**



Western blot analysis of lysates from U2OS cells, primary antibody was diluted at 1:1000, 4° over night