

**CREB-1 (phospho Ser121) rabbit pAb****Cat#: orb767672 (Manual)**

For research use only. Not intended for diagnostic use.

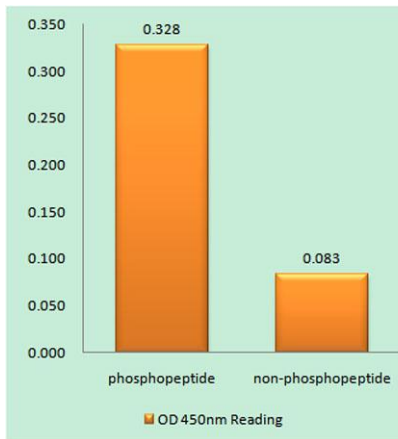
|                                 |   |
|---------------------------------|---|
| <b>Product Name</b>             | CREB-1 (phospho Ser121) rabbit pAb  |
| <b>Host species</b>             | Rabbit  |
| <b>Applications</b>             | WB;IHC;IF;ELISA   |
| <b>Species Cross-Reactivity</b> | Human;Mouse;Rat   |
| <b>Recommended dilutions</b>    | Western Blot: 1/500 - 1/2000. Immunohistochemistry: 1/100 - 1/300. ELISA: 1/5000. Not yet tested in other applications.                   |
| <b>Immunogen</b>                | The antiserum was produced against synthesized peptide derived from human CREB around the phosphorylation site of Ser121. AA range:91-140 |
| <b>Specificity</b>              | Phospho-CREB-1 (S121) Polyclonal Antibody detects endogenous levels of CREB-1 protein only when phosphorylated at S121.                   |
| <b>Formulation</b>              | Liquid in PBS containing 50% glycerol, 0.5% BSA and 0.02% sodium azide..  |
| <b>Storage</b>                  | Store at -20°C. Avoid repeated freeze-thaw cycles.  |
| <b>Protein Name</b>             | Cyclic AMP-responsive element-binding protein 1   |
| <b>Gene Name</b>                | CREB1   |
| <b>Cellular localization</b>    | Nucleus .   |
| <b>Purification</b>             | The antibody was affinity-purified from rabbit antiserum by affinity-chromatography using epitope-specific immunogen.                     |
| <b>Clonality</b>                | Polyclonal  |

Explore. Bioreagents.

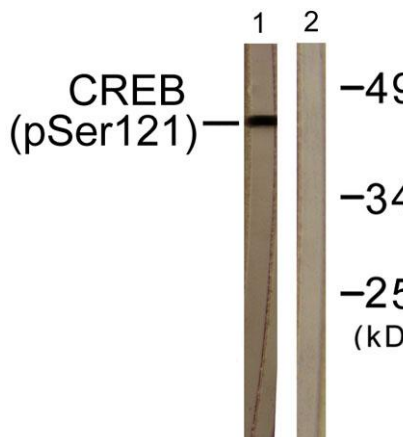
|                                |   |
|--------------------------------|---|
| <b>Concentration</b>           | 1 mg/ml   |
| <b>Observed band</b>           | 43kD  |
| <b>Human Gene ID</b>           | 1385  |
| <b>Human Swiss-Prot Number</b> | P16220  |
| <b>Alternative Names</b>       | CREB1; Cyclic AMP-responsive element-binding protein 1; CREB-1; cAMP-responsive element-binding protein 1 |

**Background**

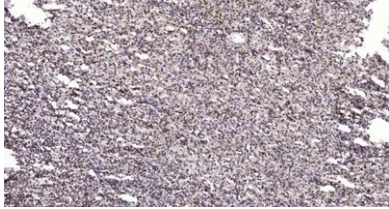
This gene encodes a transcription factor that is a member of the leucine zipper family of DNA binding proteins. This protein binds as a homodimer to the cAMP-responsive element, an octameric palindrome. The protein is phosphorylated by several protein kinases, and induces transcription of genes in response to hormonal stimulation of the cAMP pathway. Alternate splicing of this gene results in several transcript variants encoding different isoforms. [provided by RefSeq, Mar 2016],



**Enzyme-Linked Immunosorbent Assay (Phospho-ELISA) for Immunogen Phosphopeptide (Phospho-left) and Non-Phosphopeptide (Phospho-right), using CREB (Phospho-Ser121) Antibody**



**Western blot analysis of lysates from HeLa cells treated with Etoposide 25uM 24h, using CREB (Phospho-Ser121) Antibody. The lane on the right is blocked with the phospho peptide.**



**Immunohistochemical analysis of paraffin-embedded human spleen. 1, Antibody was diluted at 1:200(4° overnight). 2, Tris-EDTA,pH9.0 was used for antigen retrieval. 3,Secondary antibody was diluted at 1:200(room temperature, 45min).**