

Acetyl Histone H1 (K25) rabbit pAb**Cat#: orb767640 (Manual)**

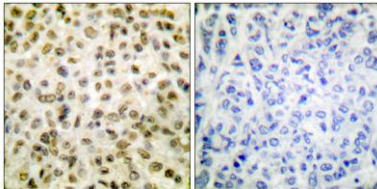
For research use only. Not intended for diagnostic use.

Product Name	Acetyl Histone H1 (K25) rabbit pAb
Host species	Rabbit
Applications	WB;IHC;IF;ELISA
Species Cross-Reactivity	Human;Monkey
Recommended dilutions	Western Blot: 1/500 - 1/2000. Immunohistochemistry: 1/100 - 1/300. ELISA: 1/20000. Not yet tested in other applications.
Immunogen	The antiserum was produced against synthesized peptide derived from human Histone H1 around the acetylated site of Lys25. AA range:131-180
Specificity	Acetyl-Histone H1 (K25) Polyclonal Antibody detects endogenous levels of Histone H1 protein only when acetylated at K25.
Formulation	Liquid in PBS containing 50% glycerol, 0.5% BSA and 0.02% sodium azide..
Storage	Store at -20°C. Avoid repeated freeze-thaw cycles.
Protein Name	Histone H1 α
Gene Name	H1FOO
Cellular localization	Cytoplasm . Nucleus . Chromosome .
Purification	The antibody was affinity-purified from rabbit antiserum by affinity-chromatography using epitope-specific immunogen.
Clonality	Polyclonal

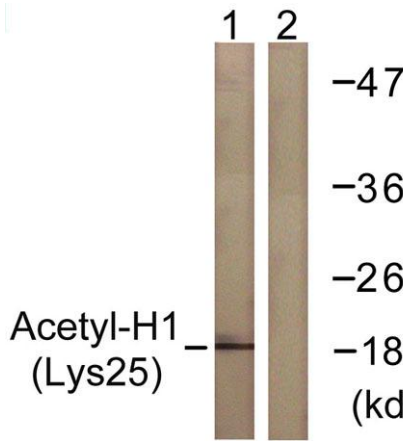
Concentration	1 mg/ml
Observed band	20kD
Human Gene ID	132243
Human Swiss-Prot Number	Q8IZA3
Alternative Names	H1FOO; H1OO; OSH1; Histone H1oo; Oocyte-specific histone H1; Oocyte-specific linker histone H1; osH1;H1K25AC

Background

Histones are basic nuclear proteins that are responsible for the nucleosome structure of the chromosomal fiber in eukaryotes. Nucleosomes consist of approximately 146 bp of DNA wrapped around a histone octamer composed of pairs of each of the four core histones (H2A, H2B, H3, and H4). The chromatin fiber is further compacted through the interaction of a linker histone, H1, with the DNA between the nucleosomes to form higher order chromatin structures. The protein encoded is a replication-independent histone that is a member of the histone H1 family. This gene contains introns, unlike most histone genes. The related mouse gene is expressed only in oocytes. [provided by RefSeq, Oct 2015],



Immunohistochemistry analysis of paraffin-embedded human breast carcinoma tissue, using Histone H1 (Acetyl-Lys25) Antibody. The picture on the right is blocked with the synthesized peptide.



Western blot analysis of lysates from COS7 cells, treated with TSA 400nM 24h, using Histone H1 (Acetyl-Lys25) Antibody. The lane on the right is blocked with the synthesized peptide.