

COL17A1 rabbit pAb**Cat#: orb767633 (Manual)**

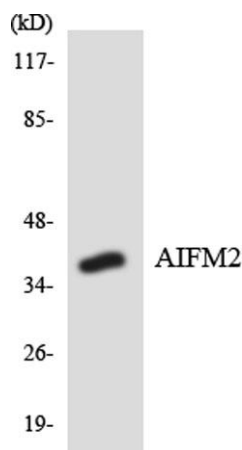
For research use only. Not intended for diagnostic use.

Product Name	COL17A1 rabbit pAb
Host species	Rabbit
Applications	IHC;IF;ELISA
Species Cross-Reactivity	Human;Mouse
Recommended dilutions	Immunohistochemistry: 1/100 - 1/300. ELISA: 1/40000. Not yet tested in other applications.
Immunogen	Synthesized peptide derived from human n-terminal COL17A1 . at AA range: 1-80
Specificity	COL17A1 Polyclonal Antibody detects endogenous levels of COL17A1 protein.
Formulation	Liquid in PBS containing 50% glycerol, 0.5% BSA and 0.02% sodium azide..
Storage	Store at -20°C. Avoid repeated freeze-thaw cycles.
Protein Name	Collagen alpha-1(XVII) chain
Gene Name	COL17A1
Cellular localization	Cell junction, hemidesmosome. Membrane; Single-pass type II membrane protein. Localized along the plasma membrane of the hemidesmosome.; [120 kDa linear IgA disease antigen]: Secreted, extracellular space, extracellular matrix, basement membrane. Exclusiv
Purification	The antibody was affinity-purified from rabbit antiserum by affinity-chromatography using epitope-specific immunogen.

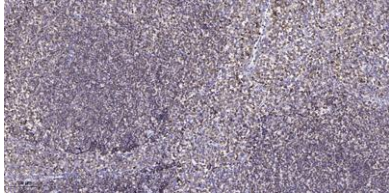
Clonality	Polyclonal
Concentration	1 mg/ml
Observed band	
Human Gene ID	1308
Human Swiss-Prot Number	Q9UMD9
Alternative Names	COL17A1; BP180; BPAG2; Collagen alpha-1(XVII) chain; 180 kDa bullous pemphigoid antigen 2; Bullous pemphigoid antigen 2

Background

This gene encodes the alpha chain of type XVII collagen. Unlike most collagens, collagen XVII is a transmembrane protein. Collagen XVII is a structural component of hemidesmosomes, multiprotein complexes at the dermal-epidermal basement membrane zone that mediate adhesion of keratinocytes to the underlying membrane. Mutations in this gene are associated with both generalized atrophic benign and junctional epidermolysis bullosa. Two homotrimeric forms of type XVII collagen exist. The full length form is the transmembrane protein. A soluble form, referred to as either ectodomain or LAD-1, is generated by proteolytic processing of the full length form. [provided by RefSeq, Jul 2008],



Western blot analysis of the lysates from HT-29 cells using AIFM2 antibody.



Immunohistochemical analysis of paraffin-embedded human tonsil. 1, Antibody was diluted at 1:200(4° overnight). 2, Tris-EDTA,pH9.0 was used for antigen retrieval. 3,Secondary antibody was diluted at 1:200(room temperature, 45min).