

**COL6A2 rabbit pAb****Cat#: orb767622 (Manual)**

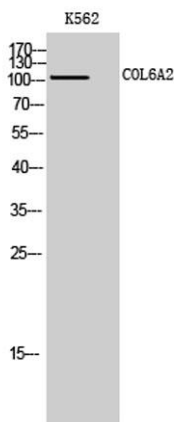
For research use only. Not intended for diagnostic use.

<b>Product Name</b>	COL6A2 rabbit pAb
<b>Host species</b>	Rabbit
<b>Applications</b>	WB;IHC;IF;ELISA
<b>Species Cross-Reactivity</b>	Human;Mouse;Monkey
<b>Recommended dilutions</b>	Western Blot: 1/500 - 1/2000. Immunohistochemistry: 1/100 - 1/300. Immunofluorescence: 1/200 - 1/1000. ELISA: 1/10000. Not yet tested in other applications.
<b>Immunogen</b>	The antiserum was produced against synthesized peptide derived from human Collagen VI alpha2. AA range:691-740
<b>Specificity</b>	COL6A2 Polyclonal Antibody detects endogenous levels of COL6A2 protein.
<b>Formulation</b>	Liquid in PBS containing 50% glycerol, 0.5% BSA and 0.02% sodium azide..
<b>Storage</b>	Store at -20°C. Avoid repeated freeze-thaw cycles.
<b>Protein Name</b>	Collagen alpha-2(VI) chain
<b>Gene Name</b>	COL6A2
<b>Cellular localization</b>	Secreted, extracellular space, extracellular matrix . Membrane ; Peripheral membrane protein . Recruited on membranes by CSPG4.
<b>Purification</b>	The antibody was affinity-purified from rabbit antiserum by affinity-chromatography using epitope-specific immunogen.
<b>Clonality</b>	Polyclonal

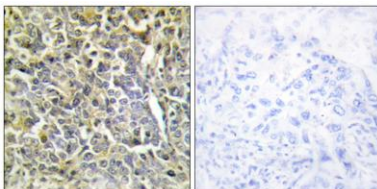
<b>Concentration</b>	1 mg/ml
<b>Observed band</b>	109kD
<b>Human Gene ID</b>	1292
<b>Human Swiss-Prot Number</b>	P12110
<b>Alternative Names</b>	COL6A2; Collagen alpha-2(VI) chain

**Background**

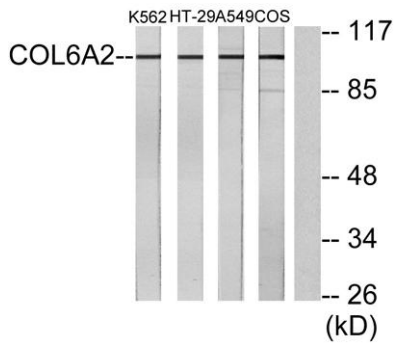
This gene encodes one of the three alpha chains of type VI collagen, a beaded filament collagen found in most connective tissues. The product of this gene contains several domains similar to von Willebrand Factor type A domains. These domains have been shown to bind extracellular matrix proteins, an interaction that explains the importance of this collagen in organizing matrix components. Mutations in this gene are associated with Bethlem myopathy and Ullrich scleroatonic muscular dystrophy. Three transcript variants have been identified for this gene. [provided by RefSeq, Jul 2008],



**Western Blot analysis of K562 cells using COL6A2 Polyclonal Antibody**



**Immunohistochemistry analysis of paraffin-embedded human lung carcinoma tissue, using Collagen VI alpha2 Antibody. The picture on the right is blocked with the synthesized peptide.**



Western blot analysis of lysates from K562, A549, HT-29, and COS7 cells, using Collagen VI alpha2 Antibody. The lane on the right is blocked with the synthesized peptide.