

CB1 rabbit pAb**Cat#: orb767598 (Manual)**

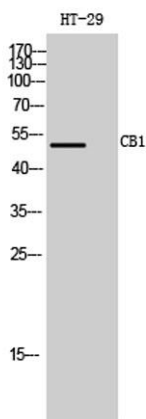
For research use only. Not intended for diagnostic use.

Product Name	CB1 rabbit pAb
Host species	Rabbit
Applications	WB;IHC;IF;ELISA
Species Cross-Reactivity	Human;Mouse;Rat;Monkey
Recommended dilutions	Western Blot: 1/500 - 1/2000. Immunohistochemistry: 1/100 - 1/300. Immunofluorescence: 1/200 - 1/1000. ELISA: 1/10000. Not yet tested in other applications.
Immunogen	The antiserum was produced against synthesized peptide derived from human CNR1. AA range:151-200
Specificity	CB1 Polyclonal Antibody detects endogenous levels of CB1 protein.
Formulation	Liquid in PBS containing 50% glycerol, 0.5% BSA and 0.02% sodium azide..
Storage	Store at -20°C. Avoid repeated freeze-thaw cycles.
Protein Name	Cannabinoid receptor 1
Gene Name	CNR1
Cellular localization	Cell membrane ; Multi-pass membrane protein . Membrane raft . Mitochondrion outer membrane . Cell projection, axon . Cell junction, synapse, presynapse . Unexpectedly, in the mitochondria, the C-terminus is located in the mitochondrial intermembrane space, a compartment topologically considered as extracellular. In canonical seven-transmembrane G-protein coupled receptors, the C-terminus is cytosolic (By similarity). Found on presynaptic axon terminals in some GABAergic neurons in the somatosensory cortex (By similarity). .

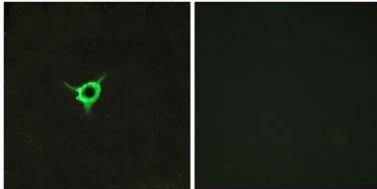
Purification	The antibody was affinity-purified from rabbit antiserum by affinity-chromatography using epitope-specific immunogen.
Clonality	Polyclonal
Concentration	1 mg/ml
Observed band	53kD
Human Gene ID	1268
Human Swiss-Prot Number	P21554
Alternative Names	CNR1; CNR; Cannabinoid receptor 1; CB-R; CB1; CANN6

Background

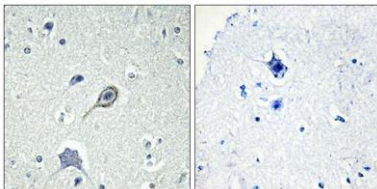
This gene encodes one of two cannabinoid receptors. The cannabinoids, principally delta-9-tetrahydrocannabinol and synthetic analogs, are psychoactive ingredients of marijuana. The cannabinoid receptors are members of the guanine-nucleotide-binding protein (G-protein) coupled receptor family, which inhibit adenylate cyclase activity in a dose-dependent, stereoselective and pertussis toxin-sensitive manner. The two receptors have been found to be involved in the cannabinoid-induced CNS effects (including alterations in mood and cognition) experienced by users of marijuana. Multiple transcript variants encoding two different protein isoforms have been described for this gene. [provided by RefSeq, May 2009],



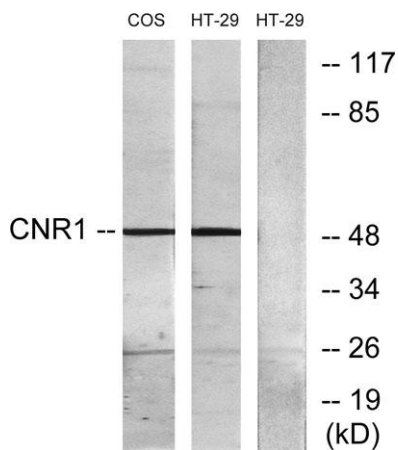
Western Blot analysis of HT-29 cells using CB1 Polyclonal Antibody



Immunofluorescence analysis of LOVO cells, using CNR1 Antibody. The picture on the right is blocked with the synthesized peptide.



Immunohistochemistry analysis of paraffin-embedded human brain tissue, using CNR1 Antibody. The picture on the right is blocked with the synthesized peptide.



Western blot analysis of lysates from HT-29 and COS7 cells, using CNR1 Antibody. The lane on the right is blocked with the synthesized peptide.