

MRGX3 rabbit pAb**Cat#: orb767542 (Manual)**

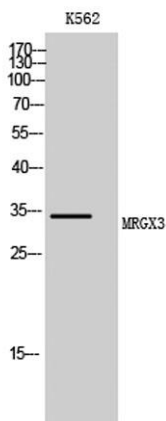
For research use only. Not intended for diagnostic use.

Product Name	MRGX3 rabbit pAb
Host species	Rabbit
Applications	WB;ELISA;IHC
Species Cross-Reactivity	Human;Rat;Mouse;
Recommended dilutions	WB 1:500-2000;IHC-p 1:50-300; ELISA 2000-20000
Immunogen	The antiserum was produced against synthesized peptide derived from human MRGX3. AA range:99-148
Specificity	MRGX3 Polyclonal Antibody detects endogenous levels of MRGX3 protein.
Formulation	Liquid in PBS containing 50% glycerol, 0.5% BSA and 0.02% sodium azide..
Storage	Store at -20°C. Avoid repeated freeze-thaw cycles.
Protein Name	Mas-related G-protein coupled receptor member X3
Gene Name	MRGPRX3
Cellular localization	Cell membrane; Multi-pass membrane protein.
Purification	The antibody was affinity-purified from rabbit antiserum by affinity-chromatography using epitope-specific immunogen.
Clonality	Polyclonal

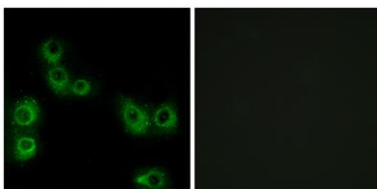
Concentration	1 mg/ml
Observed band	34kD
Human Gene ID	117195
Human Swiss-Prot Number	Q96LB0
Alternative Names	MRGPRX3; MRGX3; SNSR1; SNSR2; Mas-related G-protein coupled receptor member X3; Sensory neuron-specific G-protein coupled receptor 1/2

Background

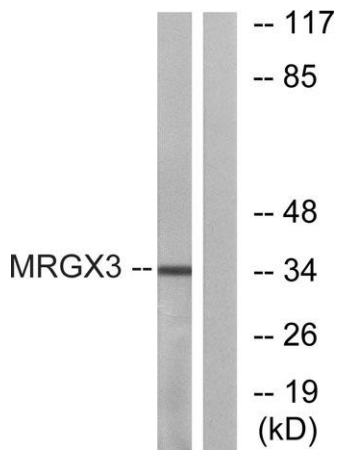
This gene encodes a member of the mas-related/sensory neuron specific subfamily of G protein coupled receptors. The encoded protein may be involved in sensory neuron regulation and in the modulation of pain. [provided by RefSeq, Oct 2009],



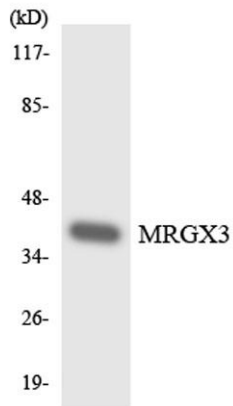
Western Blot analysis of K562 cells using MRGX3 Polyclonal Antibody



Immunofluorescence analysis of MCF7 cells, using MRGX3 Antibody. The picture on the right is blocked with the synthesized peptide.



Western blot analysis of lysates from K562 cells, using MRGX3 Antibody. The lane on the right is blocked with the synthesized peptide.



Western blot analysis of the lysates from 293 cells using MRGX3 antibody.