

Cks2 rabbit pAb**Cat#: orb767535 (Manual)**

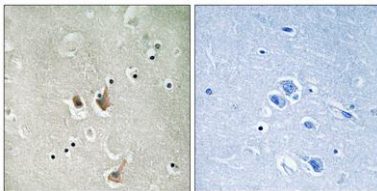
For research use only. Not intended for diagnostic use.

Product Name	Cks2 rabbit pAb
Host species	Rabbit
Applications	IHC;IF;ELISA
Species Cross-Reactivity	Human;Mouse
Recommended dilutions	Immunohistochemistry: 1/100 - 1/300. ELISA: 1/20000. Not yet tested in other applications.
Immunogen	The antiserum was produced against synthesized peptide derived from human CKS2. AA range:1-50
Specificity	Cks2 Polyclonal Antibody detects endogenous levels of Cks2 protein.
Formulation	Liquid in PBS containing 50% glycerol, 0.5% BSA and 0.02% sodium azide..
Storage	Store at -20°C. Avoid repeated freeze-thaw cycles.
Protein Name	Cyclin-dependent kinases regulatory subunit 2
Gene Name	CKS2
Cellular localization	cyclin-dependent protein kinase holoenzyme complex,SCF ubiquitin ligase complex,
Purification	The antibody was affinity-purified from rabbit antiserum by affinity-chromatography using epitope-specific immunogen.
Clonality	Polyclonal

Concentration	1 mg/ml
Observed band	
Human Gene ID	1164
Human Swiss-Prot Number	P33552
Alternative Names	CKS2; Cyclin-dependent kinases regulatory subunit 2; CKS-2

Background

CDC28 protein kinase regulatory subunit 2(CKS2) Homo sapiens CKS2 protein binds to the catalytic subunit of the cyclin dependent kinases and is essential for their biological function. The CKS2 mRNA is found to be expressed in different patterns through the cell cycle in HeLa cells, which reflects specialized role for the encoded protein. [provided by RefSeq, Jul 2008],



Immunohistochemistry analysis of paraffin-embedded human brain tissue, using CKS2 Antibody. The picture on the right is blocked with the synthesized peptide.