

**MAN1B1 rabbit pAb****Cat#: orb767499 (Manual)**

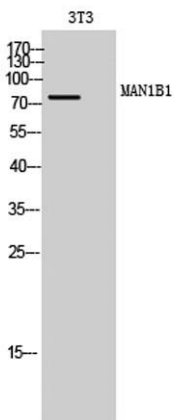
For research use only. Not intended for diagnostic use.

<b>Product Name</b>	MAN1B1 rabbit pAb
<b>Host species</b>	Rabbit
<b>Applications</b>	WB;ELISA
<b>Species Cross-Reactivity</b>	Human;Rat;Mouse;
<b>Recommended dilutions</b>	Western Blot: 1/500 - 1/2000. ELISA: 1/10000. Not yet tested in other applications.
<b>Immunogen</b>	Synthesized peptide derived from MAN1B1 . at AA range: 100-180
<b>Specificity</b>	MAN1B1 Polyclonal Antibody detects endogenous levels of MAN1B1 protein.
<b>Formulation</b>	Liquid in PBS containing 50% glycerol, 0.5% BSA and 0.02% sodium azide..
<b>Storage</b>	Store at -20°C. Avoid repeated freeze-thaw cycles.
<b>Protein Name</b>	Endoplasmic reticulum mannosyl-oligosaccharide 1,2-alpha-mannosidase
<b>Gene Name</b>	MAN1B1
<b>Cellular localization</b>	Endoplasmic reticulum membrane ; Single-pass type II membrane protein .
<b>Purification</b>	The antibody was affinity-purified from rabbit antiserum by affinity-chromatography using epitope-specific immunogen.
<b>Clonality</b>	Polyclonal

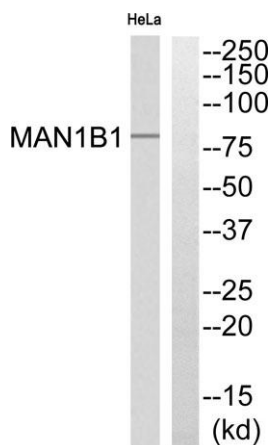
<b>Concentration</b>	1 mg/ml
<b>Observed band</b>	80kD
<b>Human Gene ID</b>	11253
<b>Human Swiss-Prot Number</b>	Q9UKM7
<b>Alternative Names</b>	MAN1B1; Endoplasmic reticulum mannosyl-oligosaccharide 1; 2-alpha-mannosidase; ER alpha-1,2-mannosidase; ER mannosidase 1; ERMan1; Man9GlcNAc2-specific-processing alpha-mannosidase; Mannosidase alpha class 1B member 1

**Background**

This gene encodes an enzyme belonging to the glycosyl hydrolase 47 family. This enzyme functions in N-glycan biosynthesis, and is a class I alpha-1,2-mannosidase that specifically converts Man9GlcNAc to Man8GlcNAc isomer B. It is required for N-glycan trimming to Man5-6GlcNAc2 in the endoplasmic-reticulum-associated degradation pathway. Mutations in this gene cause autosomal-recessive intellectual disability. Alternative splicing results in multiple transcript variants. A related pseudogene has been identified on chromosome 11. [provided by RefSeq, Dec 2011],



**Western Blot analysis of 3T3 cells using MAN1B1 Polyclonal Antibody**



**Western blot analysis of MAN1B1 Antibody. The lane on the right is blocked with the MAN1B1 peptide.**



Explore. Bioreagents.

[www.biorbyt.com](http://www.biorbyt.com)