

CPTI-M rabbit pAb**Cat#: orb767484 (Manual)**

For research use only. Not intended for diagnostic use.

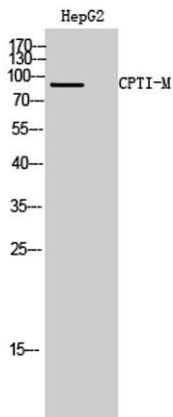
Product Name	CPTI-M rabbit pAb
Host species	Rabbit
Applications	WB;IHC;IF;ELISA
Species Cross-Reactivity	Human;Rat;Mouse;
Recommended dilutions	Western Blot: 1/500 - 1/2000. Immunohistochemistry: 1/100 - 1/300. ELISA: 1/40000. Not yet tested in other applications.
Immunogen	The antiserum was produced against synthesized peptide derived from human CPT1B. AA range:401-450
Specificity	CPTI-M Polyclonal Antibody detects endogenous levels of CPTI-M protein.
Formulation	Liquid in PBS containing 50% glycerol, 0.5% BSA and 0.02% sodium azide..
Storage	Store at -20°C. Avoid repeated freeze-thaw cycles.
Protein Name	Carnitine O-palmitoyltransferase 1 muscle isoform
Gene Name	CPT1B
Cellular localization	Mitochondrion outer membrane ; Multi-pass membrane protein .
Purification	The antibody was affinity-purified from rabbit antiserum by affinity-chromatography using epitope-specific immunogen.
Clonality	Polyclonal

Explore. Bioreagents.

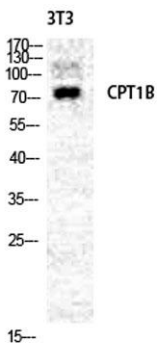
Concentration	1 mg/ml
Observed band	88kD
Human Gene ID	1120/1375
Human Swiss-Prot Number	Q92523
Alternative Names	CPT1B; KIAA1670; Carnitine O-palmitoyltransferase 1; muscle isoform; CPT1-M; Carnitine O-palmitoyltransferase I, muscle isoform; CPT I; CPTI-M; Carnitine palmitoyltransferase 1B; Carnitine palmitoyltransferase I-like protein

Background

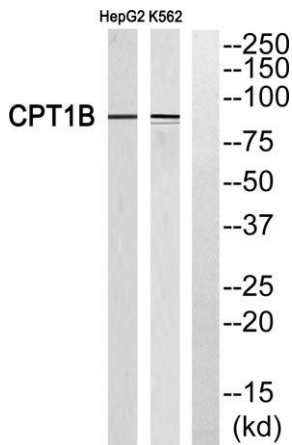
The protein encoded by this gene, a member of the carnitine/choline acetyltransferase family, is the rate-controlling enzyme of the long-chain fatty acid beta-oxidation pathway in muscle mitochondria. This enzyme is required for the net transport of long-chain fatty acyl-CoAs from the cytoplasm into the mitochondria. Multiple transcript variants encoding different isoforms have been found for this gene, and read-through transcripts are expressed from the upstream locus that include exons from this gene. [provided by RefSeq, Jun 2009],



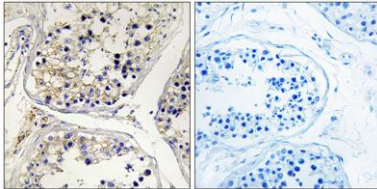
Western Blot analysis of HepG2 cells using CPTI-M Polyclonal Antibody diluted at 1:2000



Western Blot analysis of NIH-3T3 cells using CPTI-M Polyclonal Antibody diluted at 1:2000



Western blot analysis of CPT1B Antibody. The lane on the right is blocked with the CPT1B peptide.



Immunohistochemistry analysis of paraffin-embedded human testis, using CPT1B Antibody. The lane on the right is blocked with the CPT1B peptide.