

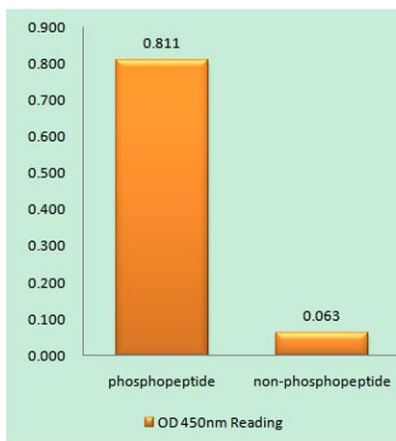
**KIF2C (phospho Ser95) rabbit pAb****Cat#: orb767454 (Manual)**

For research use only. Not intended for diagnostic use.

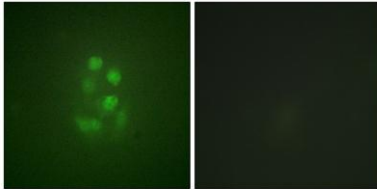
|                                 |  |
|---------------------------------|--|
| <b>Product Name</b>             | KIF2C (phospho Ser95) rabbit pAb   |
| <b>Host species</b>             | Rabbit   |
| <b>Applications</b>             | WB;IHC   |
| <b>Species Cross-Reactivity</b> | Human;Mouse  |
| <b>Recommended dilutions</b>    | WB 1:500-2000;IHC-p 1:50-300   |
| <b>Immunogen</b>                | The antiserum was produced against synthesized peptide derived from human KIF2C around the phosphorylation site of Ser95. AA range:61-110  |
| <b>Specificity</b>              | Phospho-KIF2C (S95) Polyclonal Antibody detects endogenous levels of KIF2C protein only when phosphorylated at S95.  |
| <b>Formulation</b>              | Liquid in PBS containing 50% glycerol, 0.5% BSA and 0.02% sodium azide..   |
| <b>Storage</b>                  | Store at -20°C. Avoid repeated freeze-thaw cycles.   |
| <b>Protein Name</b>             | Kinesin-like protein KIF2C   |
| <b>Gene Name</b>                | KIF2C  |
| <b>Cellular localization</b>    | Cytoplasm, cytoskeleton . Nucleus . Chromosome, centromere . Chromosome, centromere, kinetochore . Associates with the microtubule network at the growing distal tip (the plus-end) of microtubules, probably through interaction with MTUS2/TIP150 and MAPRE1 (By similarity). Association with microtubule plus ends is also mediated by interaction with KIF18B. Centromeric localization requires the presence of BUB1 and SGO2. . |

|                                |   |
|--------------------------------|---|
| <b>Purification</b>            | The antibody was affinity-purified from rabbit antiserum by affinity-chromatography using epitope-specific immunogen. |
| <b>Clonality</b>               | Polyclonal  |
| <b>Concentration</b>           | 1 mg/ml   |
| <b>Observed band</b>           | 80kD  |
| <b>Human Gene ID</b>           | 11004   |
| <b>Human Swiss-Prot Number</b> | Q99661  |
| <b>Alternative Names</b>       | KIF2C; KNSL6; Kinesin-like protein KIF2C; Kinesin-like protein 6; Mitotic centromere-associated kinesin; MCAK         |

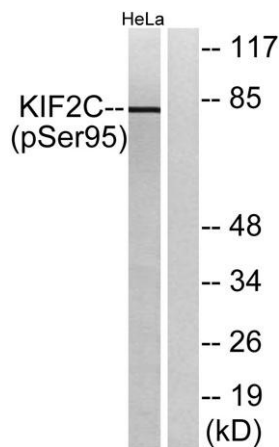
**Background** kinesin family member 2C(KIF2C) Homo sapiens This gene encodes a kinesin-like protein that functions as a microtubule-dependent molecular motor. The encoded protein can depolymerize microtubules at the plus end, thereby promoting mitotic chromosome segregation. Alternative splicing results in multiple transcript variants. [provided by RefSeq, Jul 2014],



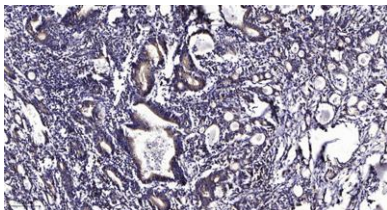
**Enzyme-Linked Immunosorbent Assay (Phospho-ELISA) for Immunogen Phosphopeptide (Phospho-left) and Non-Phosphopeptide (Phospho-right), using KIF2C (Phospho-Ser95) Antibody**



**Immunofluorescence analysis of A549 cells, using KIF2C (Phospho-Ser95) Antibody. The picture on the right is blocked with the phospho peptide.**



**Western blot analysis of lysates from HeLa cells treated with TNF 10ng/ml 30', using KIF2C (Phospho-Ser95) Antibody. The lane on the right is blocked with the phospho peptide.**



**Immunohistochemical analysis of paraffin-embedded human Gastric adenocarcinoma. 1, Antibody was diluted at 1:200(4° overnight). 2, Tris-EDTA,pH9.0 was used for antigen retrieval. 3,Secondary antibody was diluted at 1:200(room temperature, 45min).**