

**MALT1 rabbit pAb****Cat#: orb767442 (Manual)**

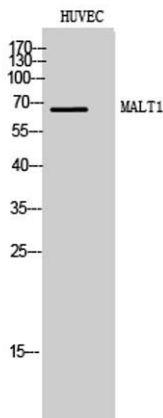
For research use only. Not intended for diagnostic use.

<b>Product Name</b>	MALT1 rabbit pAb
<b>Host species</b>	Rabbit
<b>Applications</b>	WB;IHC;IF;ELISA
<b>Species Cross-Reactivity</b>	Human;Mouse
<b>Recommended dilutions</b>	Western Blot: 1/500 - 1/2000. Immunohistochemistry: 1/100 - 1/300. Immunofluorescence: 1/200 - 1/1000. ELISA: 1/10000. Not yet tested in other applications.
<b>Immunogen</b>	The antiserum was produced against synthesized peptide derived from human MALT1. AA range:301-350
<b>Specificity</b>	MALT1 Polyclonal Antibody detects endogenous levels of MALT1 protein.
<b>Formulation</b>	Liquid in PBS containing 50% glycerol, 0.5% BSA and 0.02% sodium azide..
<b>Storage</b>	Store at -20°C. Avoid repeated freeze-thaw cycles.
<b>Protein Name</b>	Mucosa-associated lymphoid tissue lymphoma translocation protein 1
<b>Gene Name</b>	MALT1
<b>Cellular localization</b>	Cytoplasm, perinuclear region . Nucleus . Shuttles between the nucleus and cytoplasm. Found in perinuclear structures together with BCL10. .
<b>Purification</b>	The antibody was affinity-purified from rabbit antiserum by affinity-chromatography using epitope-specific immunogen.
<b>Clonality</b>	Polyclonal

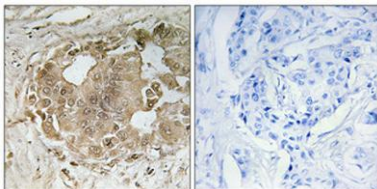
<b>Concentration</b>	1 mg/ml
<b>Observed band</b>	90kD
<b>Human Gene ID</b>	10892
<b>Human Swiss-Prot Number</b>	Q9UDY8
<b>Alternative Names</b>	MALT1; MLT; Mucosa-associated lymphoid tissue lymphoma translocation protein 1; MALT lymphoma-associated translocation; Paracaspase

## Background

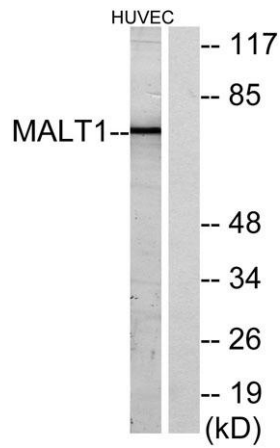
This gene has been found to be recurrently rearranged in chromosomal translocation with two other genes - baculoviral IAP repeat-containing protein 3 (also known as apoptosis inhibitor 2) and immunoglobulin heavy chain locus - in mucosa-associated lymphoid tissue lymphomas. The protein encoded by this gene may play a role in NF-kappaB activation. Two alternatively spliced transcript variants encoding different isoforms have been described for this gene. [provided by RefSeq, Jul 2008],



Western Blot analysis of HUVEC cells using MALT1 Polyclonal Antibody



Immunohistochemical analysis of paraffin-embedded Human breast cancer. Antibody was diluted at 1:100(4° overnight). High-pressure and temperature Tris-EDTA,pH8.0 was used for antigen retrieval. Negative control (right) obtained from antibody was pre-absorb



**Western blot analysis of lysates from HUVEC cells, using MALT1 Antibody. The lane on the right is blocked with the synthesized peptide.**