

StARD10 rabbit pAb**Cat#: orb767432 (Manual)**

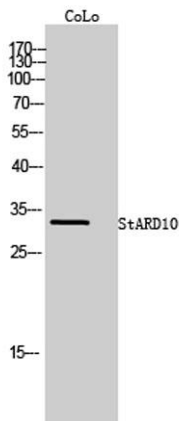
For research use only. Not intended for diagnostic use.

Product Name	StARD10 rabbit pAb
Host species	Rabbit
Applications	WB;ELISA;IHC
Species Cross-Reactivity	Human;Mouse;Rat
Recommended dilutions	WB 1:500-2000;IHC-p 1:50-300; ELISA 2000-20000
Immunogen	Synthesized peptide derived from the Internal region of human StARD10.
Specificity	StARD10 Polyclonal Antibody detects endogenous levels of StARD10 protein.
Formulation	Liquid in PBS containing 50% glycerol, 0.5% BSA and 0.02% sodium azide..
Storage	Store at -20°C. Avoid repeated freeze-thaw cycles.
Protein Name	PCTP-like protein
Gene Name	STARD10
Cellular localization	Cell projection, cilium, flagellum . Cytoplasm . Membrane . In testis was predominantly detected at the flagella of elongated spermatids, with a strong signal also found at the tail of epididymal sperm (By similarity). Mainly cytosolic. .
Purification	The antibody was affinity-purified from rabbit antiserum by affinity-chromatography using epitope-specific immunogen.

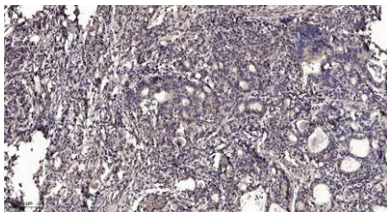
Clonality	Polyclonal
Concentration	1 mg/ml
Observed band	33kD
Human Gene ID	10809
Human Swiss-Prot Number	Q9Y365
Alternative Names	STARD10; SDCCAG28; CGI-52; PCTP-like protein; PCTP-L; Antigen NY-CO-28; START domain-containing protein 10; StARD10; Serologically defined colon cancer antigen 28; StAR-related lipid transfer protein 10

Background

function:May play specific roles in sperm maturation or fertilization.,sequence caution:Various sequencing problems as well as a translation in a wrong frame.,similarity:Contains 1 START domain.,



Western Blot analysis of CoLo cells using StARD10 Polyclonal Antibody



Immunohistochemical analysis of paraffin-embedded human Gastric adenocarcinoma. 1, Antibody was diluted at 1:200(4° overnight). 2, Tris-EDTA,pH9.0 was used for antigen retrieval. 3,Secondary antibody was diluted at 1:200(room temperature, 45min).