

**MASP-2 rabbit pAb****Cat#: orb767423 (Manual)**

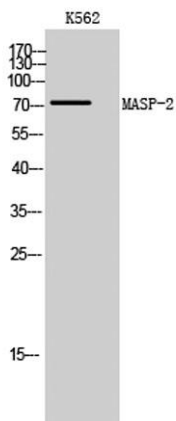
For research use only. Not intended for diagnostic use.

<b>Product Name</b>	MASP-2 rabbit pAb
<b>Host species</b>	Rabbit
<b>Applications</b>	WB;ELISA
<b>Species Cross-Reactivity</b>	Human;Rat;Mouse;
<b>Recommended dilutions</b>	Western Blot: 1/500 - 1/2000. ELISA: 1/20000. Not yet tested in other applications.
<b>Immunogen</b>	The antiserum was produced against synthesized peptide derived from human MASP2. AA range:227-276
<b>Specificity</b>	MASP-2 Polyclonal Antibody detects endogenous levels of MASP-2 protein.
<b>Formulation</b>	Liquid in PBS containing 50% glycerol, 0.5% BSA and 0.02% sodium azide..
<b>Storage</b>	Store at -20°C. Avoid repeated freeze-thaw cycles.
<b>Protein Name</b>	Mannan-binding lectin serine protease 2
<b>Gene Name</b>	MASP2
<b>Cellular localization</b>	Secreted.
<b>Purification</b>	The antibody was affinity-purified from rabbit antiserum by affinity-chromatography using epitope-specific immunogen.
<b>Clonality</b>	Polyclonal

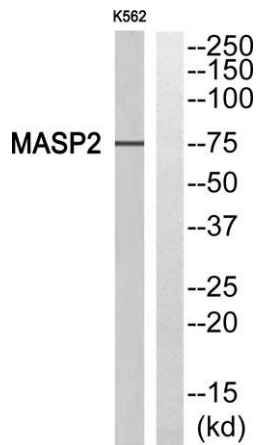
<b>Concentration</b>	1 mg/ml
<b>Observed band</b>	75kD
<b>Human Gene ID</b>	10747
<b>Human Swiss-Prot Number</b>	O00187
<b>Alternative Names</b>	MASP2; Mannan-binding lectin serine protease 2; MBL-associated serine protease 2; Mannose-binding protein-associated serine protease 2; MASP-2

**Background**

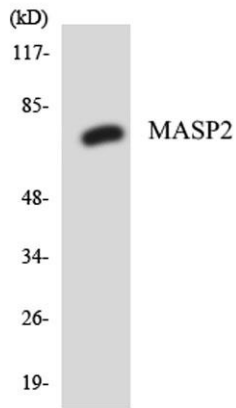
mannan binding lectin serine peptidase 2(MASP2) Homo sapiens This gene encodes a member of the peptidase S1 family of serine proteases. The encoded preproprotein is proteolytically processed to generate A and B chains that heterodimerize to form the mature protease. This protease cleaves complement components C2 and C4 in order to generate C3 convertase in the lectin pathway of the complement system. The encoded protease also plays a role in the coagulation cascade through cleavage of prothrombin to form thrombin. Myocardial infarction and acute stroke patients exhibit reduced serum concentrations of the encoded protein. Alternative splicing results in multiple transcript variants, at least one of which encodes an isoform that is proteolytically processed. [provided by RefSeq, Feb 2016],



**Western Blot analysis of K562 cells using MASP-2 Polyclonal Antibody**



Western blot analysis of MASP2 Antibody. The lane on the right is blocked with the MASP2 peptide.



Western blot analysis of the lysates from HT-29 cells using MASP2 antibody.