

**NFAT5 (phospho Ser155) rabbit pAb****Cat#: orb767414 (Manual)**

For research use only. Not intended for diagnostic use.

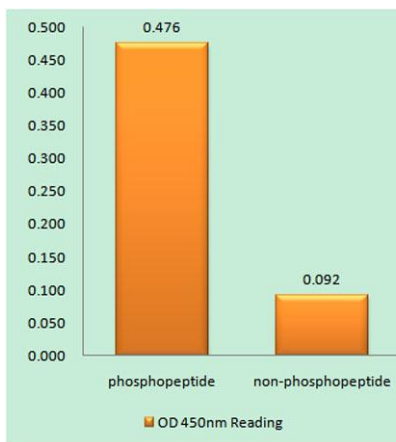
<b>Product Name</b>	NFAT5 (phospho Ser155) rabbit pAb
<b>Host species</b>	Rabbit
<b>Applications</b>	WB;IHC
<b>Species Cross-Reactivity</b>	Human;Mouse
<b>Recommended dilutions</b>	WB 1:500-2000;IHC-p 1:50-300
<b>Immunogen</b>	The antiserum was produced against synthesized peptide derived from human NFAT5/TonEBP around the phosphorylation site of Ser155. AA range:121-170
<b>Specificity</b>	Phospho-NFAT5 (S155) Polyclonal Antibody detects endogenous levels of NFAT5 protein only when phosphorylated at S155.
<b>Formulation</b>	Liquid in PBS containing 50% glycerol, 0.5% BSA and 0.02% sodium azide..
<b>Storage</b>	Store at -20°C. Avoid repeated freeze-thaw cycles.
<b>Protein Name</b>	Nuclear factor of activated T-cells 5
<b>Gene Name</b>	NFAT5
<b>Cellular localization</b>	Nucleus . Cytoplasm . Nuclear distribution increases under hypertonic conditions. .
<b>Purification</b>	The antibody was affinity-purified from rabbit antiserum by affinity-chromatography using epitope-specific immunogen.
<b>Clonality</b>	Polyclonal

Explore. Bioreagents.

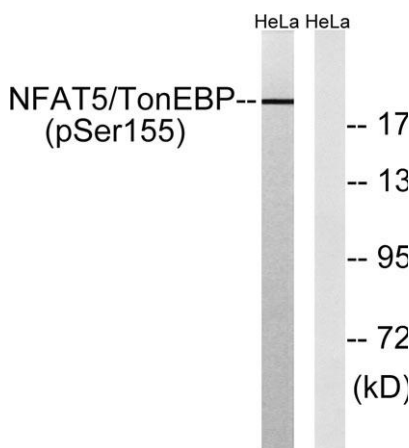
<b>Concentration</b>	1 mg/ml
<b>Observed band</b>	200kD
<b>Human Gene ID</b>	10725
<b>Human Swiss-Prot Number</b>	O94916
<b>Alternative Names</b>	NFAT5; KIAA0827; TONEBP; Nuclear factor of activated T-cells 5; NF-AT5; T-cell transcription factor NFAT5; Tonicity-responsive enhancer-binding protein; TonE-binding protein; TonEBP

**Background**

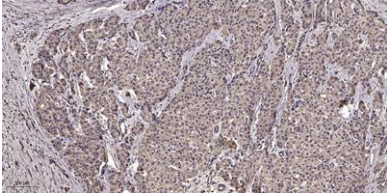
The product of this gene is a member of the nuclear factors of activated T cells family of transcription factors. Proteins belonging to this family play a central role in inducible gene transcription during the immune response. This protein regulates gene expression induced by osmotic stress in mammalian cells. Unlike monomeric members of this protein family, this protein exists as a homodimer and forms stable dimers with DNA elements. Multiple transcript variants encoding different isoforms have been found for this gene. [provided by RefSeq, Jul 2008],



**Enzyme-Linked Immunosorbent Assay (Phospho-ELISA) for Immunogen Phosphopeptide (Phospho-left) and Non-Phosphopeptide (Phospho-right), using NFAT5/TonEBP (Phospho-Ser155) Antibody**



**Western blot analysis of lysates from HeLa cells treated with forskolin 40nM 30', using NFAT5/TonEBP (Phospho-Ser155) Antibody. The lane on the right is blocked with the phospho peptide.**



**Immunohistochemical analysis of paraffin-embedded human liver cancer. 1, Antibody was diluted at 1:200(4° overnight). 2, Tris-EDTA,pH9.0 was used for antigen retrieval. 3,Secondary antibody was diluted at 1:200(room temperature, 45min).**